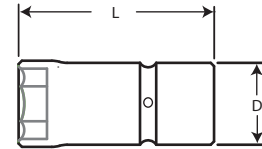
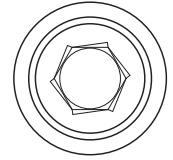


Taper-Lok™ 1/2" Drive, Fast-Lead, 6-point, Hex

Metric Size (mm)	Length		Diameter		Part Number	Dowel Pin	External O-Ring
	mm	in	mm	in			
13	44.958	1.77	25.1968	0.992	24W500465	24R501279	24R501271
14	44.958	1.77			24W500466		
15	50.546	1.99			24W500467		
16	50.546	1.99			24W500468		
17	50.546	1.99			24W500469		
18	59.944	2.36			24W500470		
19	59.944	2.36			24W500471		
20	68.326	2.69			24W500472		
21	68.326	2.69			24W500473		
22	68.326	2.69			24W500474		



1/2" Impact Socket Set	Part No.
1/2" Drive, Taper-Lok™, Metric, Impact Socket-Set Contains 1-each of the sockets listed on the left	24W500464

SAE Standard Size (mm)	Length		Diameter		Part Number	Dowel Pin	External O-Ring
	mm	in	mm	in			
7/16	58.42	2.3	18.796	0.74	24W500489	24R501365	24R501379
1/2	58.42	2.3			24W500490		
9/16	58.42	2.3			24W500491		
5/8	58.42	2.3			24W500492		
11/16	58.42	2.3			24W500493		
3/4	69.088	2.72			24W500494		
13/16	69.088	2.72			24W500495		
7/8	69.088	2.72			24W500496		
15/16	82.296	3.24			24W500497		
1	82.296	3.24			24W500498		
1 1/16	82.296	3.24			24W500499		
1 1/8	82.296	3.24			24W500500		
1 1/4	98.298	3.87			24W500501		
1 5/16	98.298	3.87			24W500502		
1 3/8	98.298	3.87			24W500503		

1/2" Impact Socket Set	Part No.
1/2" Drive, Taper-Lok™, SAE, Impact Socket-Set Contains 1-each of the sockets listed on the left	24W500488