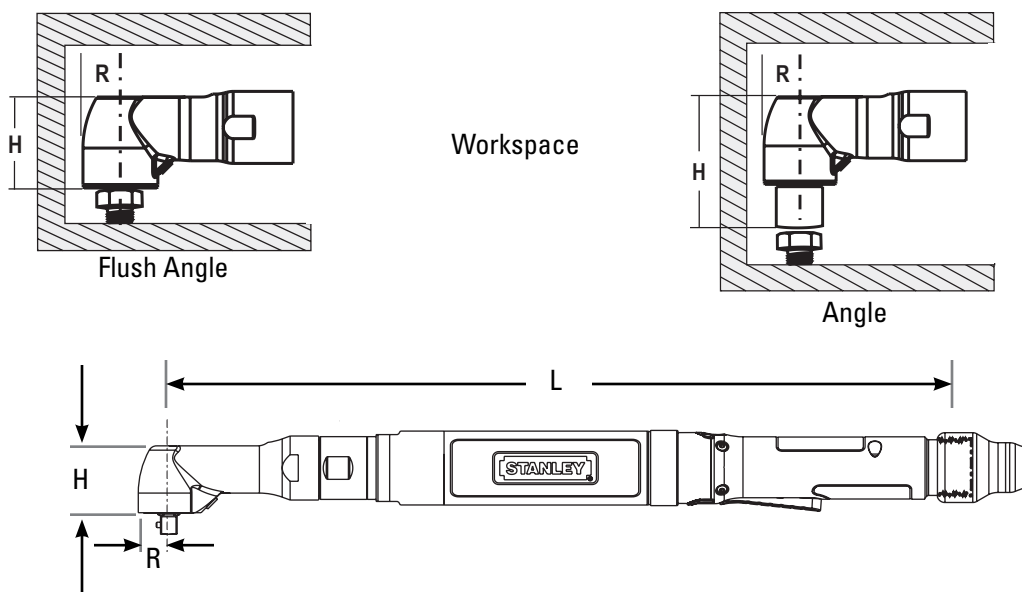


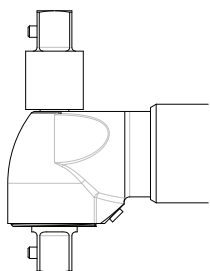
E/ EA Series Angle Lever

STANLEY

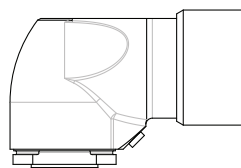
Angle Lever Tools
(0.8 to 21 Nm)

Model	Rated Speed		Torque		"R" Side to Center		"H" Head Height		"L" Length		Weight		Output
	RPM	Nm	lb ft	mm	in	mm	in	mm	in	kg	lb	Standard	
E12LA10-4	2325	4	2.95	10	0.39	31.9	1.26	271	10.7	0.7	1.6	1/4" SD	
EA23LA10-6	2875	6	4.42	10	0.39	31.9	1.26	376	14.8	1	2.2	1/4" SD	
E12LA10-6	1490	6	4.42	10	0.39	31.9	1.26	285	11.2	0.8	1.7	1/4" SD	
E12LA13-6	1690	6	4.42	13	0.51	32.7	1.29	287	11.3	0.8	1.7	3/8" SD	
EA23LA13-10	2090	10	7.4	13	0.51	32.7	1.29	379	14.9	1.1	2.4	3/8" SD	
E12LA13-10	1080	10	7.4	13	0.51	32.7	1.29	287	11.3	0.8	1.7	3/8" SD	
E23LA13-11	1500	11	8	13	0.51	32.7	1.29	435	17.1	1.5	3.3	3/8" SD	
E12LA13-14	850	14	10.3	13	0.51	32.7	1.29	287	11.3	0.8	1.7	3/8" SD	
E12LA14-17	565	17	12.5	14	0.55	36.5	1.44	297	11.7	0.9	1.9	3/8" SD	
EA23LA13-18	925	18	13.3	13	0.51	32.7	1.29	393	15.5	1.2	2.6	3/8" SD	
E12LA13-18	590	18	13.3	13	0.51	32.7	1.29	287	11.3	0.8	1.7	3/8" SD	
E12LA14-20	715	20	14.7	14	0.55	36.5	1.44	297	11.7	0.9	1.9	3/8" SD	
E12LA14-21	600	21	15.5	14	0.55	36.5	1.44	297	11.7	0.9	1.9	3/8" SD	

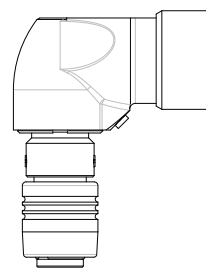
Angle Tool Output Options



Double Ended



Flush



Quick Change

Angle Tool Options

A10 Output	Part No.
1/4" Square Drive	20D122900
3/8" Square Drive	20D122901
1/4" Quick Change	20D122902
A13 Short Output (E12 Models)	Part No.
3/8" Double-Ended, LH Thread	20D121912
3/8" Double-Ended, RH Thread	20D121917
Flush Socket 12mm Max*	20D121918
1/4" Square Drive	20D121919
1/4" Quick Change	20D121916
1/4" Magnetic Internal Hex	20D121920
A13 Long Output (E23 Models)	Part No.
3/8" Double-Ended, RH Thread	B3117
Rivnut Attachment	F3376
1/4" Square Drive	A3156
1/4" Magnetic Internal Hex	A3157
1/4" - 28 Threaded Female	A3351
3/8" - 24 Threaded Magnetic	A3158
5/16" - 24 Threaded Female	A3441
A14 Output	Part No.
1/4" Internal Hex	20D112110
Suspension Bails ***	Part No.
Standard Wire Bail	A3061
Swivel (E12 only)	20K101402
Swivel (E or EA 23/33 only)	20K101400
Vinyl Covers	Part No.
A10 Output	20D250711
A13 Output	20D250705
A14 Output	20D250701
2-Hand Anti-Tiedown	Part No.
E23 Tools	20G100104
EA Tools	Add TH
Socket Lock Pin 3/8" or 1/2" SD	Part No.
Standard	20D227800
Rounded (Ball Detent)	20D227801
Handle Options	Part No.
E12 / EA2/3 Rubber Grip	20H207910
E2/3/4/5 Rubber Grip	20H207207
E12 Extended Lever Assembly	20H102201
EA2/3 Front Facing Lever	20H100008
E2/3 Front Facing Lever	20H100005
E12 Heavy Duty Cable Adapter	20H103100
Other Options	Part No.
E12 LED Flexible Light Kit	20K101804
E12 LED Stationary Light Kit	20S113202

Guided Collar selection on page 175

*Flush socket selection starts on page 161

*** Suspension bails on page 174

E/ EA Series Angle Lever

Angle Tool Options

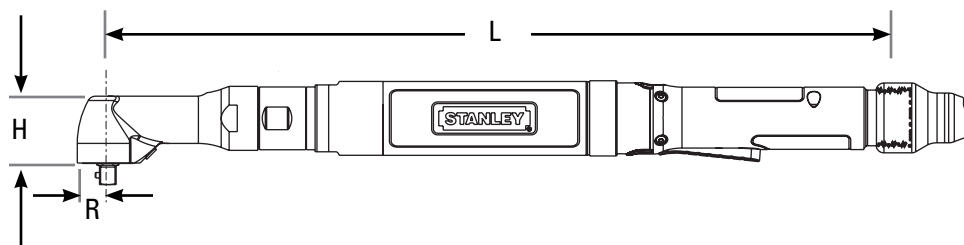
A15 Output	Part No.
3/8" Square Drive	20D138900
Flush Socket *	20D283200
1/2" Square Drive	20D138901
A18 Output	Part No.
3/8" Square Drive	F3825
3/8" Double-Ended, RH	A6466
3/8" Double-Ended, LH	F3828
1/2" Double-Ended, RH	A6473
1/2" Double-Ended, LH	F3830
Flush Socket 16mm Max*	F3834
1/4" Magnetic Internal Hex	F3832
5/16" Magnetic Internal Hex	F3833
3/8" - 24 Thread Female	F3831
3/8" Square Drive Paint Marking	F3973
Retractable Spindle†	L3150
3/8" Square Drive Anti-Vibration	20D104600
A19 Output	Part No.
3/8" Square Drive (48 Nm Max)	20D100005
1/2" Square Drive	20D100000
1/2" Square Drive Anti-Vibration	20D100001
1/2" Double-Ended, RH	20D100003
Flush Socket 17mm Max*	20D100007
2-Hand Anti-Tiedown	Part No.
E23 Tools	20G100015
E33 Tools (48 Nm Max)	20G100012
E33 Tools (60 Nm)	20G100013
E34 Tools	20G100414
EA Tools	Add TH
Suspension Bails ***	Part No.
Swivel (Horizontal)	20K101400
Standard (Vertical)	A3061
Vinyl Covers	Part No.
A15 Output	20D250701
A18 Output	20D250702
A19 Output	20D250707
Extended Packing Cap	Part No.
A15 Output	20D140103
A18 Output	20D140100
A19 Output	20D140101
Socket Lock Pin 3/8" or 1/2" SD	Part No.
Standard	20D227800
Rounded (Ball Detent)	20D227801
Handle Options	Part No.
EA2/3 Rubber Grip	20H207910
E2/3/4/5 Rubber Grip	20H207207
EA2/3 Front Facing Lever	20H100008
E2/3 Front Facing Lever	20H100005

Guided Collar selection on page 175

*Flush socket selection starts on page 161

*** Suspension bails on page 174

Angle Lever Tools (4 to 60 Nm)



Model	Rated Speed		Torque		"R" Side to Center		"H" Head Height		"L" Length		Weight		Output
	RPM	Nm	lb ft	mm	in	mm	in	mm	in	kg	lb	Standard	
EA23LA15-20	1065	20	14.7	15	0.59	39.9	1.57	401	15.8	1.3	2.9	3/8" SD	
E23LA15-23	685	23	16.9	15	0.59	39.9	1.57	442	17.4	1.6	3.6	3/8" SD	
EA23LA15-29	740	29	21.4	15	0.59	39.9	1.57	401	15.8	1.3	2.9	3/8" SD	
E33LA15-35	865	35	25.8	15	0.59	39.9	1.57	468	18.4	1.8	4.0	3/8" SD	
E23LA15-35	415	35	25.8	15	0.59	39.9	1.57	442	17.4	1.6	3.6	3/8" SD	
EA33LA15-40	930	40	29.5	15	0.59	36.5	1.44	401	15.8	1.5	3.4	3/8" SD	
EA33LA18-40	930	40	29.5	18	0.71	39.3	1.55	426	16.8	1.7	3.8	3/8" SD	
EA33LA18-46	805	46	33.9	18	0.71	39.3	1.55	426	16.8	1.4	3.1	3/8" SD	
E33LA18-46	750	46	33.9	18	0.71	39.3	1.55	426	16.8	1.9	4.3	3/8" SD	
EA33LA19-48	780	48	35.4	19	0.75	49	1.9	492	19.4	1.9	4.1	3/8" SD	
E33LA19-48	730	48	35.4	19	0.75	49	1.9	492	19.4	2.2	4.8	3/8" SD	
E43LA19-60	700	60	44.3	19	0.75	49	1.9	517	20.3	2.6	5.8	1/2" SD	
EA33LA19-60	685	60	44.3	19	0.75	49	1.9	492	19.4	1.9	4.1	1/2" SD	
E33LA19-60	570	60	44.3	19	0.75	49	1.9	492	19.4	1.9	4.1	1/2" SD	

†Retractable Spindle Options

Square Drive	Extension	Travel	Part No.	Square Drive	Extension	Travel	Part No.
3/8"	Standard	1"	M4265	3/8"	6"	1"	20D118502
3/8"	1"	1"	20D118500	3/8"	7"	1"	20D118504
3/8"	2"	1"	M4266	1/2"	Standard	1"	M4289
3/8"	3"	1"	20D118501	1/2"	2"	1"	M4290
3/8"	4"	1"	20D118503				

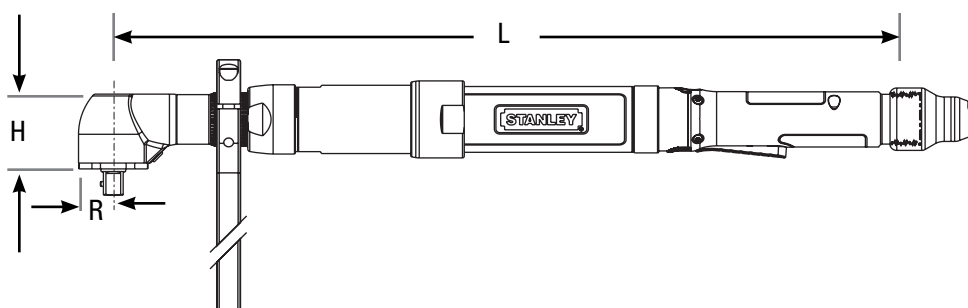
E/ EA Series Angle Lever

STANLEY®

Angle Lever Tools
(14 to 125 Nm)

Angle Tool Options

A19 Output	Part No.
1/2" Square Drive	20D100100
1/2" Square Drive Anti-Vibration	20D100101
1/2" Double-Ended, RH	20D100107
Flush Socket 17mm Max*	20D100106
A22(A) Output	Part No.
1/2" Square Drive	20D100305
Flush Socket 18mm Max*	20D100309
1/2" Double-Ended, RH	20D100326
2-Hand Anti-Tiedown Switch	Part No.
E34/44/54 Tools	20K400001
EA Tools	Add TH
Suspension Bails ***	Part No.
Swivel (Horizontal)	20K200000
Standard (Vertical)	A3061
Reaction Devices	Part No.
Reaction Bar	20K100000
Mounting Flange	20K100300
Base Mount Bracket	20K100500
Vinyl Covers	Part No.
A19 Output	20D250707
A22 Output	20D250708
Socket Lock Pin 3/8" or 1/2" SD	Part No.
Standard	20D227800
Rounded (Ball Detent)	20D227801
Handle Options	Part No.
EA3 Rubber Grip	20H207910
E2/3/4/5 Rubber Grip	20H207207
EA3 Front Facing Lever	20H100008
E3 Front Facing Lever	20H100005
E4/5 Front Facing Lever	20H100105
Motor Options	Part No.
E3 Tool Cooling Fan Kit	20M102600



Model	Rated Speed		Torque		"R" Side to Center		"H" Head Height		"L" Length		Weight		Output
	RPM	Nm	lb ft	mm	in	mm	in	mm	in	kg	lb	Standard	
E34LA19-50	655	50	36.9	19	0.75	49	1.9	522	20.6	2.9	6.3	1/2" SD	
E44LA19-70	635	70	51.6	19	0.75	49	1.9	531	20.9	3.3	7.3	1/2" SD	
E34LA19-70	435	70	51.6	19	0.75	49	1.9	522	20.6	2.9	6.3	1/2" SD	
EA34LA19-80	530	80	59.0	19	0.75	49	1.9	506	19.9	2.4	5.3	1/2" SD	
EA34LA22A-100	410	100	73.8	22	0.88	50	2	514	20.2	2.7	5.9	1/2" SD	
E44LA22-101	545	101	74.5	22	0.88	50	2	539	21.2	3.5	7.6	1/2" SD	
E34LA22-101	335	101	74.5	22	0.88	50	2	530	20.9	3	6.6	1/2" SD	
E34LA22-115	300	115	84.8	22	0.88	50	2	530	20.9	3	6.6	1/2" SD	
E54LA22-120	470	120	88.5	22	0.88	50	2	742	29	4.75	10.5	1/2" SD	
E44LA22-120	360	120	88.5	22	0.88	50	2	539	21.2	3.5	7.6	1/2" SD	
EA34LA22A-120	340	120	88.5	22	0.88	50	2	514	20.2	2.7	5.9	1/2" SD	
E44LA22-125	405	125	92.2	22	0.88	50	2	539	21.2	3.5	7.6	1/2" SD	

Guided Collar selection on page 175

*Flush socket selection starts on page 161

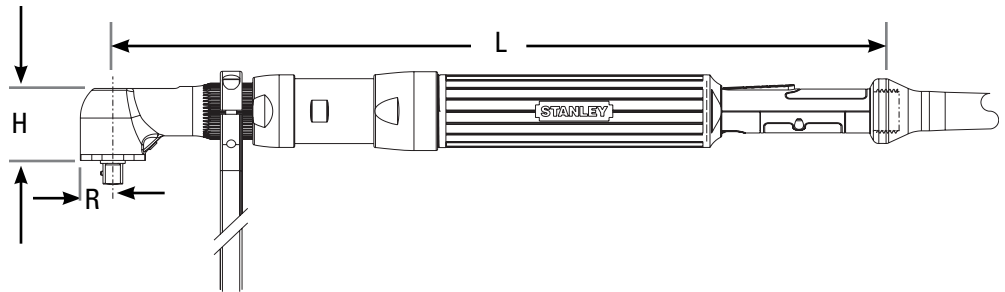
*** Suspension bails on page 174

E Series Angle Lever

Angle Lever Tools (20 to 401 Nm)

Angle Tool Options

A26 Output (100 Nm Max)	Part No.
1/2" Square Drive	20D100401
5/8" Square Drive	20D100400
A26 Output	Part No.
3/4" Square Drive	20D1004010
Flush Socket *	20D100409
A32 Output	Part No.
3/4" Square Drive (Pin)	20D102200
3/4" Square Drive (Ball)	20D104300
Flush Socket *	20D102201
Hex Insert #	20D102204
2-Hand Anti-Tiedown Switch	Part No.
E34/44/54 Tools	20K400002
Reaction Bar (A26 & A32 Outputs)	Part No.
Reaction Bar, Steel (<300 Nm)	20K100200
Reaction Bar, Steel (>300 Nm)	20K100202
Base Mount Bracket	Part No.
Mounting Flange	20K100700
Suspension Bails ***	Part No.
Swivel (A26, A32 only)	20K200100
Vinyl Covers	Part No.
A26 Output	20D250709
A32 Output	20D250710
Socket Lock Pin 3/8" or 1/2" SD	Part No.
Standard	20D227800
Rounded (Ball Detent)	20D227801
Socket Lock PinLock Pin 3/4" SD	Part No.
Standard	20D227800
Rounded (Ball Detent)	20D227802
Handle Options	Part No.
E2/3/4/5 Rubber Grip	20H207207
E4/5 Front Facing Lever	20H100105



	Rated Speed	Torque		"R" Side to Center		"H" Head Height		"L" Length		Weight		Output
Model	RPM	Nm	lb ft	mm	in	mm	in	mm	in	kg	lb	Standard
E55LA26-100	880	100	74	26	1.02	60	2.4	632	24.9	5.8	12.8	1/2" SD
E55LA26-140	610	140	103	26	1.02	60	2.4	632	24.9	5.8	12.8	3/4" SD
E45LA26-150	330	150	110	26	1.02	60	2.4	582	22.9	5.2	11.5	3/4" SD
E55LA26-167	510	167	123	26	1.02	60	2.4	632	24.9	5.8	12.8	3/4" SD
E45LA26-201	265	201	148	26	1.02	60	2.4	582	22.9	5.2	11.5	3/4" SD
E55LA26-221	385	221	163	26	1.02	60	2.4	632	24.9	5.8	12.8	3/4" SD
E55LA32-337	255	337	248	32	1.26	73	2.9	639	25.1	6.5	14.2	3/4" SD
E55LA32-401	205	401	295	32	1.26	73	2.9	639	25.1	5.85	12.87	3/4" SD

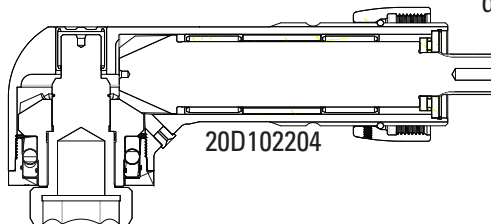
#Inserts for 20D102204 A32 Hex Insert Output

Description	Part No.
1-1/8" Hex Socket Insert	A5172
30mm Hex Flush Socket Insert	20D222100
30mm with 3/4" Extension Flush Socket Insert	20D228900
1-1/16" Hex Socket Insert	20DS203600

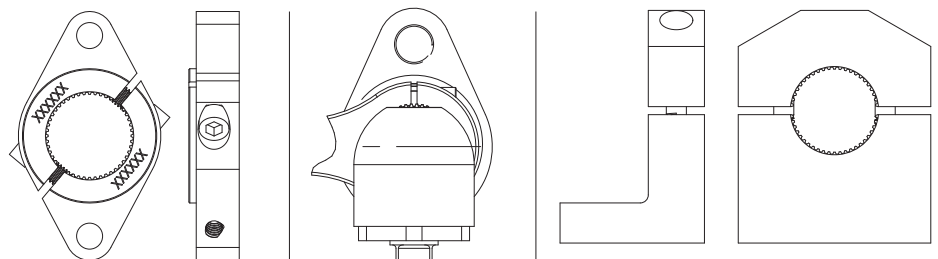
The maximum hex size for the A32 Flush Socket Output is 27 mm (1-1/16").

Use the Hex Insert Output with these Inserts for larger hex sizes.

This will add 16.3 mm (0.64") to the "H" dimension of the tool.



Mounting / Reaction Options



Optional Flange Mount Bracket

Reaction Bar or Bail

Optional Base Mount Bracket

Guided Collar selection on page 175
 *Flush socket selection starts on page 161
 *** Suspension bails on page 174