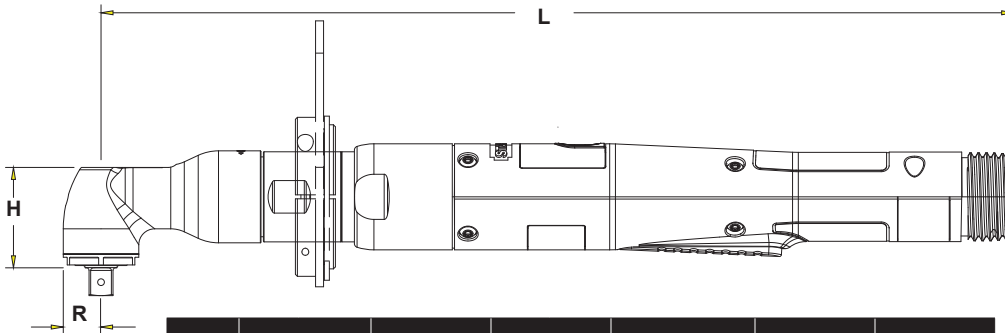


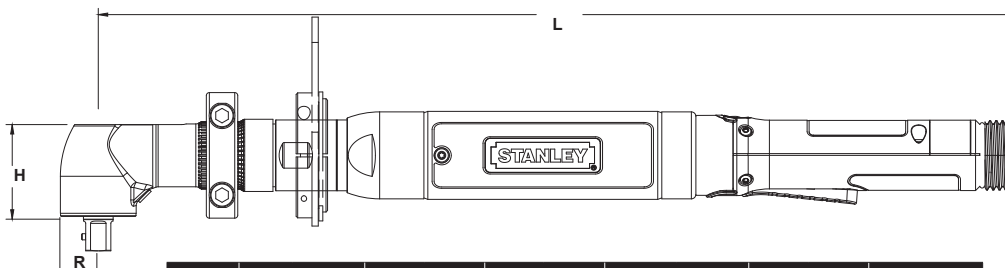
EB Series - Angle Lever



Angle Lever Tools (1.2 to 60 Nm)

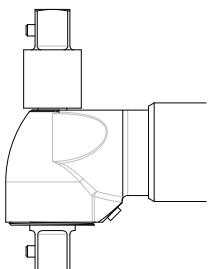


Model	Rated Speed		Torque		"R" Side to Center		"H" Head Height		"L" Length		Weight		Output
	RPM	Nm	lb ft	mm	in	mm	in	mm	in	kg	lb	Standard	
EB12LA10-6	2110	6	4.42	10	0.39	31.9	1.26	319.3	12.6	0.89	1.96	1/4" SD	
EB12LA13-8	1400	8	5.90	13	0.51	32.7	1.29	321.6	12.7	0.93	2.05	3/8" SD	
EB12LA13-13	970	13	9.58	13	0.51	32.7	1.29	321.6	12.7	0.93	2.05	3/8" SD	
EB22LA13-13	1550	13	9.58	13	0.51	32.7	1.29	343.3	13.5	1.08	2.38	3/8" SD	
EB22LA13-18	1075	18	13.3	13	0.51	32.7	1.29	343.3	13.5	1.08	2.38	3/8" SD	

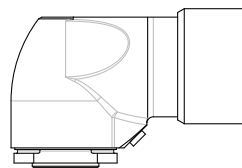


Model	Rated Speed		Torque		"R" Side to Center		"H" Head Height		"L" Length		Weight		Output
	RPM	Nm	lb ft	mm	in	mm	in	mm	in	kg	lb	Standard	
EB22LA15-24	825	24	17.7	15	0.59	36.5	1.44	366.5	14.4	1.21	2.66	3/8" SD	
EB33LA15-27	1515	27	19.91	15	0.59	36.5	1.44	415.7	16.4	1.55	3.41	3/8" SD	
EB33LA18-35	1165	35	25.81	18	0.71	39.3	1.55	444.7	17.5	1.66	3.65	3/8" SD	
EB33LA15-40	1015	40	29.49	15	0.59	36.5	1.44	415.7	16.4	1.55	3.41	3/8" SD	
EB33LA19-40	1025	40	29.49	19	0.75	48.7	1.92	458.4	18.0	1.87	4.11	1/2" SD	
EB33LA18-48	880	48	35.39	18	0.71	39.3	1.55	455.4	17.9	1.66	3.65	3/8" SD	
EB33LA19-60	680	60	44.24	19	0.75	48.7	1.92	458.4	18.0	1.87	4.11	1/2" SD	

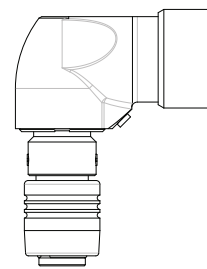
EB Angle Tool Output Options



Double Ended



Flush



Quick Change

EB Angle Tool Options

A10 Output	Part No.
3/8" Square Drive	20D122901
1/4" Quick Change	20D122902
A13 Output	Part No.
3/8" Double-Ended, LH Thread	20D121912
Flush Socket 10mm Max*	20D121914
1/4" Quick Change	20D121916
3/8" Double-Ended, RH Thread	20D121917
Flush Socket 13mm Max*	20D121918
1/4" Square Drive	20D121919
1/4" Magnetic Internal Hex	20D121920
A15 Threaded Output 20D137500	Part No.
3/8" Square Drive	20D138900
Flush Socket *	20D138904
1/2" Square Drive	20D138901
A15 Output Splined 20D137504	Part No.
3/8" Square Drive	20D138900
Flush Socket *	20D138902
1/2" Square Drive	20D138901
A18 Output	Part No.
3/8" Square Drive	20D136500
3/8" Double-Ended, RH Thread	20D136502
Flush Socket *	20D136503
A19 Threaded Output	Part No.
Flush Socket *	20D100021
Reaction Bar (A15 Splined/ A19)	Part No.
Reaction Bar Assembly	20K100000
Mounting Flange Assembly	20K100300
Base Mount Bracket Assembly	20K100500
Suspension Bails ***	Part No.
Wire Bail (EB_2/3/4 Tools)	A3061
Swivel (A10, A13 only)	20K101402
Swivel (A18 only)	20K101400
Swivel (A19, A22 only)	20K200000
Standard (A13, A15, A18 only)	B3432
Vinyl Covers	Part No.
A10 Output	20D250711
A13 Output	20D250711
A15 Output	20D250701
A18 Output	20D250702
A19 Output	20D250707
Socket Lock Pin 3/8" or 1/2" SD	Part No.
Standard	20D227800
Rounded (Ball Detent)	20D227801

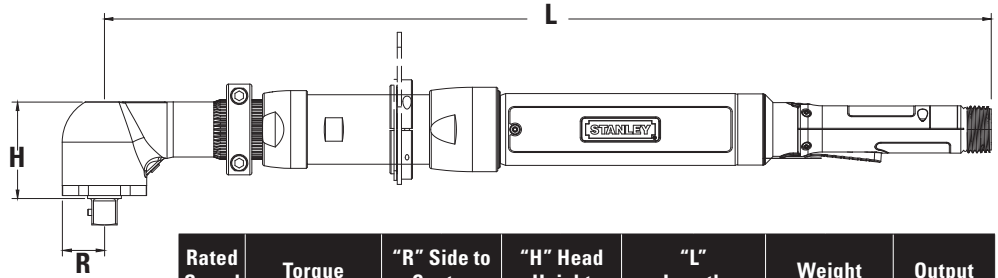
Guided Collar selection on page 175

*Flush socket selection starts on page 161

*** Suspension bails on page 174

EB Series - Angle Lever

Angle Lever Tools (11 to 400 Nm)



EB Angle Tool Options

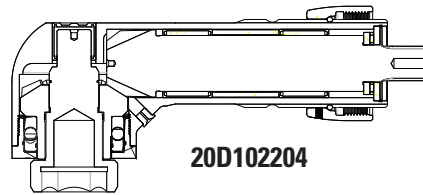
A19 Splined Output	Part No.
Anti-Vibration 1/2" SD	20D100101
Flush Socket *	20D100106
1/2" Double-Ended, RH Thread	20D100107
A22A Output	Part No.
1/2" Square Drive	20D100305
Flush Socket *	20D100309
1/2" Double-Ended, RH Thread	20D100326
Reaction Bar (A19 & A22 Outputs)	Part No.
Reaction Bar Assembly	20K100000
Mounting Flange Assembly	20K100300
Base Mount Bracket Assembly	20K100500
A26 Output	Part No.
3/4" Square Drive	20D1004010
Flush Socket *	20D100409
A32 Output	Part No.
3/4" Square Drive (Pin)	20D102200
3/4" Square Drive (Ball)	20D104300
Flush Socket *	20D102201
Hex Insert #	20D102204
Reaction Bar (A26 & A32 Outputs)	Part No.
Reaction Bar, Steel (<300 Nm)	20K100200
Reaction Bar, Steel (>300 Nm)	20K100202
Base Mount Bracket	20K100600
Mounting Flange-B	20K100700
Suspension Bails ***	Part No.
Swivel (A19, A22A only)	20K200000
Swivel (A26, A32 only)	20K200100
Vinyl Covers	Part No.
A19 Output	20D250707
A22 Output	20D250708
A26 Output	20D250709
A32 Output	20D250710
Socket Lock Pin 3/8" or 1/2" SD	Part No.
Standard	20D227800
Rounded (Ball Detent)	20D227801
Socket Lock Pin 3/4" SD	Part No.
Standard	20D227800
Rounded (Ball Detent)	20D227802

Model	Rated Speed		Torque		"R" Side to Center		"H" Head Height		"L" Length		Weight		Output
	RPM	Nm	lb ft	mm	in	mm	in	mm	in	kg	lb	Standard	
EB44LA19-55	1190	55	40.55	19	0.75	48.7	1.92	458.4	18.0	2.78	6.12	1/2" SD	
EB34LA19-70	610	70	51.61	19	0.75	48.7	1.92	488.0	19.2	2.34	5.15	1/2" SD	
EB34LA22A-80	510	80	58.98	22	0.87	50.0	2.0	530.0	20.9	2.66	5.85	1/2" SD	
EB44LA22A-80	810	80	58.98	22	0.87	50.0	2.0	539	21.2	3.10	6.82	1/2" SD	
EB34LA22A-115	340	115	84.79	22	0.87	50.0	2.0	530.0	20.9	2.66	5.85	1/2" SD	
EB44LA22A-120	550	120	88.48	22	0.87	50.0	2.0	539	21.2	3.29	7.23	1/2" SD	
EB55LA26-120	825	120	88.48	26	1.02	60	2.4	632	24.9	5.72	12.58	3/4" SD	
EB55LA26-160	620	160	117.97	26	1.02	60	2.4	632	24.9	5.81	12.78	3/4" SD	
EB45LA26-165	400	165	121.65	26	1.02	60	2.4	582	22.9	5.25	11.56	3/4" SD	
EB45LA26-220	260	220	162.21	26	1.02	60	2.4	582	22.9	5.57	12.27	3/4" SD	
EB55LA26-220	460	220	162.21	26	1.02	60	2.4	632	24.9	5.83	12.82	3/4" SD	
EB55LA32-300	340	300	221.19	32	1.26	73	2.9	639	25.1	6.46	14.21	3/4" SD	
EB55LA32-400	225	400	294.92	32	1.26	73	2.9	639	25.1	6.46	14.21	3/4" SD	

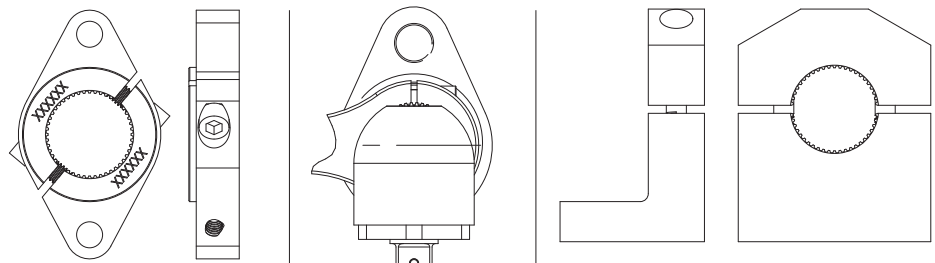
#Inserts for 20D102204 A32 Hex Insert Output

Description	Part No.
1-1/8" Hex Socket Insert	A5172
30mm Hex Flush Socket Insert	20D222100
30mm with 3/4" Extension Flush Socket Insert	20D228900

The maximum hex size for the A32 Flush Socket Output is 27 mm (1-1/16"). Use the Hex Insert Output with these Inserts for larger hex sizes. This will add 16.3 mm (0.64") to the "H" dimension of the tool.



Mounting / Reaction Options



Optional Flange Mount Bracket

Reaction Bar or Bail

Optional Base Mount Bracket

Guided Collar selection on page 175
 *Flush socket selection starts on page 161
 *** Suspension bails on page 174