

The fact that dust can represent a hazard in the working environment is well documented.

Dust particles from certain materials are dangerous to health. Even inert dust particles that cause no permanent damage can still be retained in the body and make breathing more difficult. The size of dust particles of most concern are those below 0.005 mm.

Efficient dust control can make a significant contribution to efficiency and productivity in industrial operations. It is already a requirement in countries with strict health and safety regulations.

Efficient dust control will:

- Reduce the health risk for operators exposed to potentially dangerous particles.
- Give a more favourable working environment which will encourage greater efficiency and effort from those who operate industrial tools.

The most efficient method of dust collection is dust extraction at the point of dust creation, i.e. on the tool itself. This not only ensures very efficient extraction but also allows a relatively low power vacuum source to be used.

Atlas Copco spot suction kits provide an extraction hood fixed to the tool. It is fitted with a plastic or brush edge to trap heavier particles as well as the small ones. The following pages show a number of applications and the necessary dust extraction kits with their contents.

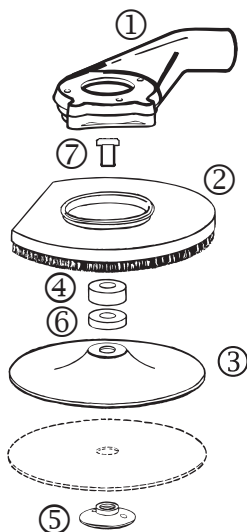


Accessories

Spot suction kits

LSV28/38/48/GTG40

SPOT SUCTION KIT FOR SANDING WITH FIBER DISC. SANDERS WITH UNC 5/8" SPINDLE.

Suction requirement: 250 m³/h

		Ordering No.
LSV28 S040/S060/S085 5 in	Includes	KIT
		1 Chamber
		2 Suction cap 125 mm with brush
		3 Backing pad 125 mm
		4 Distance washer 12 mm
LSV28 ST12-13 5 in	Includes	KIT
		1 Chamber
		2 Suction cap 125 mm with brush
		3 Backing pad 125 mm
		6 Distance washer 9 mm
LSV28 S040/S060 7 in	Includes	KIT
		1 Chamber
		2 Suction cap 180 mm with brush
		3 Backing pad 180 mm
		6 Distance washer 9 mm
LSV28 S021 7 in	Includes	KIT
		1 Chamber
		2 Suction cap 180 mm with brush
		3 Backing pad
		6 Distance washer 12 mm
LSV38 S066 7 in	Includes	KIT^a
		1 Chamber
		2 Suction cap 180 mm with brush
		3 Backing pad 180 mm
		5 Nut 5/8"
		6 Distance washer 9 mm
LSV38 S085 5 in	Includes	KIT^a
		1 Chamber
		2 Suction cap 125 mm with brush
		3 Backing pad 125 mm
		5 Nut 5/8"
		6 Distance washer 9 mm
LSV48 SA066 7 in	Includes	KIT
		1 Chamber
		2 Suction cap 180 mm with brush
		3 Backing pad 180 mm
		5 Flange nut 5/8"
GTG40 S060 7 in	Includes	KIT
		1 Chamber
		2 Suction cap 180 mm with brush
		3 Backing pad 180 mm
		5 Flange nut 5/8"

^a Use with adapter, Ordering No. 4150 1928 90, to be ordered separately.

VACUUM HOSE, 5.9 FT

Hose	Ordering No.
Ø 1" (25 mm) for 74 cfm (125 m ³ /h) suction requirement	3780 2724 20
Ø 1 9/32" (32 mm) for 118 cfm (200 m ³ /h) suction requirement	3780 2724 31
Ø 1 1/2" (38 mm) for 147 cfm (250 m ³ /h) suction requirement	3780 2724 40

BRUSH FOR SUCTION CAP

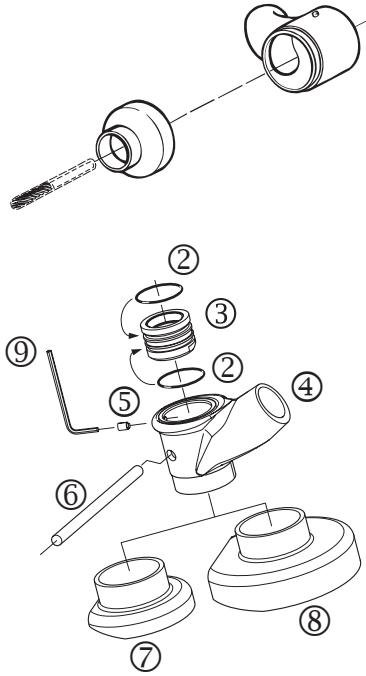
	Ordering No.
Separate brush 3/4" high, for cap Ø 5"	3780 2678 00
Separate brush 3/4" high, for cap Ø 7"	3780 2677 50
Separate brush 1 3/16" high, for cap Ø 7"	3780 2677 30

Spot suction kits

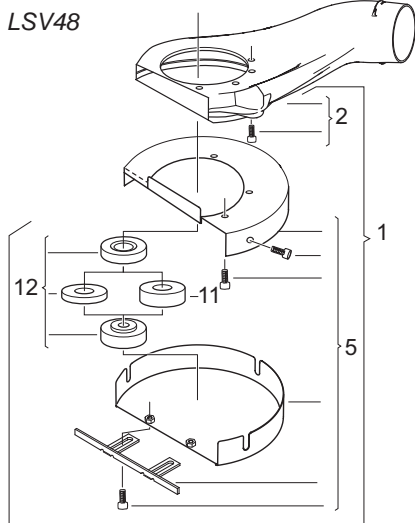
Accessories

SPOT SUCTION KIT FOR DIE GRINDERS

Suction requirement: 125 m³/h (LSF19), 200 m³/h (LSF28)



		Ordering No.
LSV12 S-1	KIT for sanding pad dia 2-3"	3780 4092 64
LSF19 S	KIT for burr	3780 3015 22
	Optional Diamond burr 6 mm	3780 5013 70
LSF19 S	KIT for drum	3780 4011 61
	Includes 3 Shaft dia 6 mm	3780 5090 30
	4 Locking screw	3780 5090 60
	Optional 5 Diamond drum 27 mm	3780 5033 00
LSV19 S-1	KIT for sanding pad dia 50 and 75 mm	3780 4092 62
	Includes 6 O-ring 23x1.6	0663 2103 85
	7 Clamp ring	4112 1065 04
	9 Lock screw M4x6 A1	0192 1168 00
	10 Lock pin	4112 0779 00
LSF28	KIT for burr	3780 4007 42
	Optional Diamond burr 6 mm	3780 5013 70



DUST EXTRACTION FOR DIAMOND CUTTING BLADE (GRP-CUTTING)

		Ordering No.
LSV48 SA085/SA066 7 in	KIT	3780 4093 42
	Includes 12 Flange set	3780 2799 50
	Optional 7 in diamond cutting disc	3780 5074 62