



MYS850L MYS850LF

HANDLING | ASSEMBLY | DISPENSING

KEY BENEFITS

Uses the same controller as larger Yaskawa robots

Easy vision integration with MotoSight 2D, a Cognex In-Sight based vision system

Yields extraordinary production results, while requiring minimal capital investment

High work envelope to mounting surface ratio

Flexible asset; easily re-deployable as production needs change

SPECIFICATIONS

10 kg maximum payload

850 mm radial reach

420 mm U-axis stroke

CONTROLLERS



DXM100



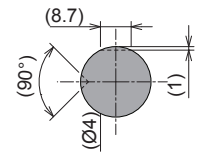
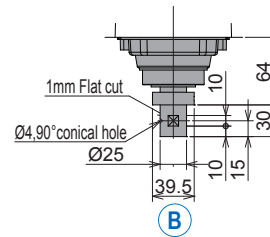
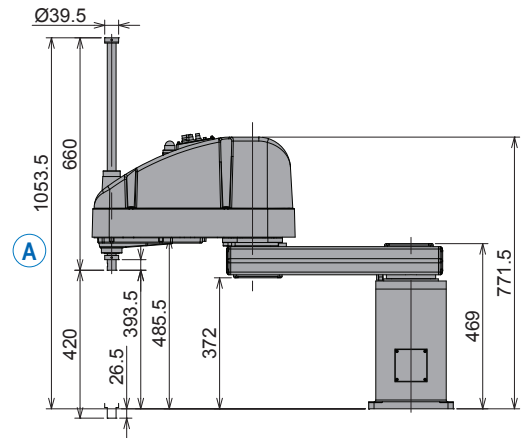
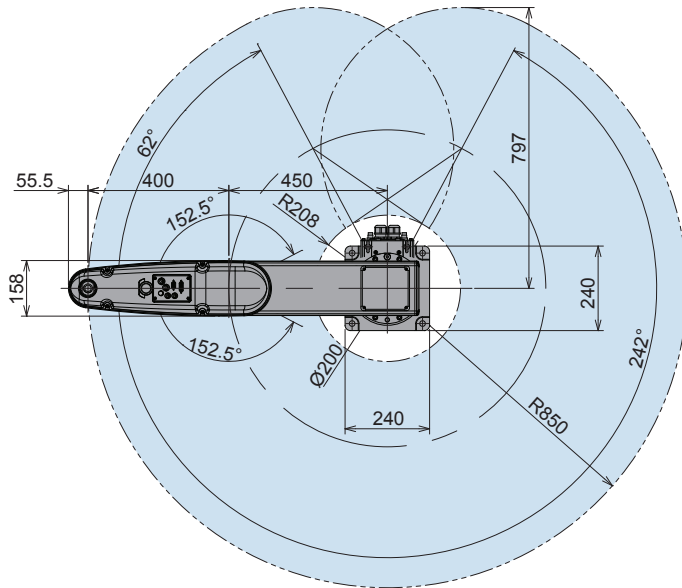
FS100



MLX200

- 4-axis SCARA robot ideal for high-speed handling and assembly systems.
- Offers superior performance in applications such as assembly, dispensing, part kitting, small part handling, case packing, lab automation, packaging, solar and semiconductor processing.
- Ideal for multi-process systems requiring pick-and-place capability.
- Easily integrates with existing robot applications to expand current automated processes.
- Rounds out the Yaskawa product line of 4-15 axis robots with payloads of 1-800 kg.
- Uses same controller as other Yaskawa robots. Enclosure size may vary depending on robot size and payload.
- Offers high speed in a compact form that requires minimal mounting space.
- Features a radial reach of 850 mm, long (420 mm) U-axis stroke and 10 kg maximum payload.
- External axes available, further expanding the capabilities of this flexible asset.
- High repeatability with compliance in all axes make these robots ideal for assembly tasks.
- Wide variety of fieldbus connectivity available.

MYS850L | MYS850LF



VIEW A

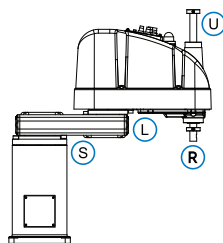
VIEW B

All dimensions are metric (mm) and for reference only.
Request detailed drawings for all design/engineering requirements.

SPECIFICATIONS

| Axes | Maximum motion range [°] | Maximum speed [°/sec.] | Allowable moment of inertia [kg•m ²] | Repeatability [mm] | Controlled axes | 4 |
|-------|--------------------------|------------------------|--|--------------------|--------------------|----------------|
| S + L | 850 mm | - | - | ±0.025 | Payload [kg] | 5 Rated/10 Max |
| S | +242/-62 | 424 | - | - | Radial reach [mm] | 850 |
| L | ±152.5 | 678 | - | - | U-axis stroke [mm] | 420 |
| U | 420 mm | 2,350 mm/s | - | ±0.01 | Weight [kg] | 48 |
| R | ±360 | 2,415 | 0.02 Rated/0.25 Max | ±0.005° | Power rating [kVA] | 1.25 |

NOTE: Maximum speed and moment of inertia may vary depending on load.



AXES LEGEND

- S-Axis: 1st Horizontal Arm
- L-Axis: 2nd Horizontal Arm
- U-Axis: Upper/Lower
- R-Axis: Rotate

Representative SCARA model

Yaskawa America, Inc.
Motoman Robotics Division

100 Automation Way
Miamisburg, OH 45342
Tel: 937.847.6200
Fax: 937.847.6277

motoman.com

YASKAWA