

Introduction – Mechanical Wrenches

Mechanical wrench series

The mechanical wrenches in the new Atlas Copco Saltus product line form the basis for manual tightening. They enable you to find the optimal solution for your individual tightening situation regardless whether you are working in assembly lines, rework or repair and maintenance, and even when limited operating space is available.

The wrenches are also the perfect back-up strategy for your controlled assembly technology.

With regard to workplace equipment and costs, manual tightening wrenches are often more efficient and increase your productivity. The easy handling has earned wide acceptance among operators.

Our different wrench types offer the right strategy for nearly any application.

Optional setting keys are available for adjustments of the pre-set value for all wrenches.

CWR 'CLICK' WRENCH SERIES

The torque wrenches in our CWR series provide the distinctive "Click" which is a very clear feedback when reaching the pre-set torque value. The repeatability of $\pm 4\%$ makes them perfect for use in assembly lines.

BWR 'BREAKING' WRENCH SERIES

The torque wrenches in our BWR series are primarily used in professional industrial environments. The possibility of over-tightening is significantly reduced due to a 22° breaking-angle of the unique BWR mechanism. Therefore, the BWR wrenches are very well-suited for use in assembly lines as well as for repair and maintenance.

You can profit from a wide range of end fittings which are quickly changed. Coupled with our Atlas Copco end fittings for the BWR series, you will obtain a high degree of accuracy in your tightening process.

SWR 'SLIPPING' WRENCH SERIES

The torque wrenches in the SWR series are "automatically triggered" once the pre-set torque value is reached. The Camover-technology completely avoids over-tightening. After triggering, the SWR wrench is again ready to use. The integrated ratchet



function ensures you controlled clockwise tightening. The high repeating accuracy with a tolerance of $\pm 4\%$ makes the SWR wrenches ideal for assembly lines for extreme continuous operation.

Mechanical Wrenches

CWR 'CLICK' WRENCH SERIES

- Wide range from 2Nm up to 300Nm.
- Reversible version "R" for tightening in both directions.
- Very small sizes ideal for tightening in limited space.
- Repeatability of $\pm 4\%$.
- Easy and safe adjusting and handling.
- Standard drive (9x12 or 14x18) for a wide range of suitable end fittings.



Model	Torque range		Length mm	Weight g	Ø mm	Drive	Ordering No.
	Nm	ft lb					
CWR-20	3-20	2.2-14.8	129	248	21	9x12	8439 0041 00
CWR-25	2-25	1.5-18.4	174	288	21	9x12	8439 0041 01
CWR-50	5-50	3.7-37	236	466	21	9x12	8439 0041 02
CWR-85	15-85	11-62.7	305	576	21	9x12	8439 0041 03
CWR-120	50-120	37-88.5	349	666	24	9x12	8439 0041 04
CWR-200	50-200	37-148	419	916	30x26	14x18	8439 0041 05
CWR-300	60-300	44.2-221	685	1366	32x28	14x18	8439 0041 06
Reversible wrench type							
CWR-20 R	3-20	2.2-14.8	129	248	21	9x12	8439 0041 10
CWR-25 R	2-25	1.5-18.4	174	288	21	9x12	8439 0041 11
CWR-50 R	5-50	3.7-37	236	466	21	9x12	8439 0041 12
CWR-85 R	15-85	11-62.7	305	576	21	9x12	8439 0041 13
CWR-120 R	50-120	37-88.5	349	666	24	9x12	8439 0041 14

BWR - 'BREAKING' WRENCH SERIES

- High process reliability as over-tightening is significantly reduced due to the 22° breaking angle.
- Wide range of wrenches from 2Nm up to 2000Nm.
- Extremely high durability and high repeatability of $\pm 4\%$.
- Robust construction.
- Easy and safe adjusting.



Model	Torque range		Length mm	Weight g	Ø mm	Drive	Ordering No.
	Nm	ft lb					
BWR-20	2-20	1.5-14.8	213	250	8x16	BWR-20/35	8439 0042 00
BWR-35	5-35	3.7-25.8	288	550	8x16	BWR-20/35	8439 0042 01
BWR-100	20-100	14.8-74	410	950	10x20	BWR-100	8439 0042 02
BWR-240	80-240	59-177	677	2700	14x30	BWR-240	8439 0042 03
BWR-440	140-440	103-324.5	857	4300	16x34	BWR-440	8439 0042 04
BWR-750	300-750	221-553	961	6400	20x41	BWR-750	8439 0042 05
BWR-1300	500-1300	369-959	1256	8140	21x45	BWR-1300	8439 0042 06
BWR-2000	800-2000	590-1475	1982	13450	21x45	BWR-2000	8439 0042 07

SWR 'SLIPPING' WRENCH SERIES

- Torque range from 5 Nm up to 110Nm.
- High process reliability as camover mechanism avoids over-tightening.
- Overloading of the wrench itself is impossible.
- Repeatability of $\pm 4\%$.
- Robust construction.
- Easy and safe adjusting.
- 3/8" (SWR-30 / SWR-60) respectively 1/2" (SWR-110) ratchet drive allows use of standard sockets.

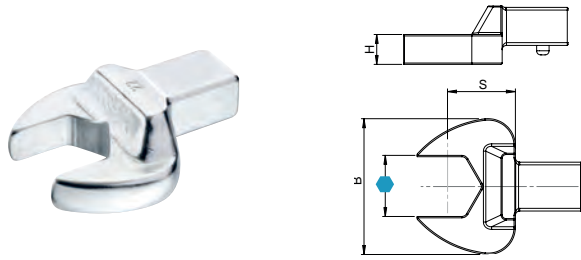


Model	Torque range		Length mm	Weight g	Drive	Ordering No.
	Nm	ft lb				
SWR-30	5-30	3.7-22	269	640	3/8"	8439 0043 00
SWR-60	15-60	11-44	354	1050	3/8"	8439 0043 01
SWR-110	40-110	29.5-96	453	1900	1/2"	8439 0043 02

End Fittings CWR

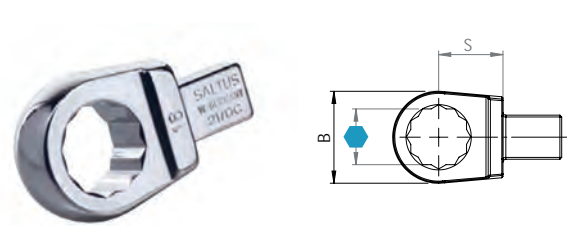
Mechanical Wrenches

Open End



	mm/in	B mm	H mm	S mm	g	Max Nm	Ordering No.
9 x 12							
7	22	5	17.5	40	7	4027 5011 00	
8	22	5	17.5	39	10	4027 5011 01	
9	26	5.5	17.5	38	14	4027 5011 02	
10	26	5.5	17.5	42	20	4027 5011 03	
11	26	5.5	17.5	41	25	4027 5011 04	
12	30	7	17.5	43	32	4027 5011 05	
13	30	7	17.5	48	40	4027 5011 06	
14	35	8	17.5	52	50	4027 5011 07	
15	35	8	17.5	51	60	4027 5011 08	
16	38	8.5	17.5	58	70	4027 5011 09	
17	38	8.5	17.5	60	80	4027 5011 10	
18	42	9	20	71	100	4027 5011 11	
19	42	9	20	74	115	4027 5011 12	
20	42	9	20	76	115	4027 5011 13	
21	46	11	22	95	115	4027 5011 14	
22	46	11	22	95	115	4027 5011 15	
24	48	11	25	106	130	4027 5011 16	
27	58	13	30	235	150	4027 5011 17	
32	64	15	40	267	190	4027 5011 18	
1/4	22	5	17.5	37	7	4027 5010 00	
5/16	22	5	17.5	36	10	4027 5010 01	
3/8	26	5.5	17.5	38	20	4027 5010 02	
7/16	26	5.5	17.5	38	25	4027 5010 03	
1/2	30	7	17.5	47	32	4027 5010 04	
9/16	34	8	17.5	50	50	4027 5010 05	
5/8	38	8.5	17.5	56	70	4027 5010 06	
11/16	38	8.5	17.5	57	80	4027 5010 07	
3/4	42	9	20	71	115	4027 5010 08	
14 x 18							
13	30	7	25	128	40	4027 5011 21	
14	35	8	25	129	50	4027 5011 22	
15	35	8	25	132	60	4027 5011 23	
16	38	9	25	140	70	4027 5011 24	
17	38	9	25	136	80	4027 5011 25	
18	42	10	25	147	90	4027 5011 26	
19	42	10	25	145	95	4027 5011 27	
20	42	10	25	155	100	4027 5011 28	
21	50	11	25	171	30	4027 5011 29	
22	50	11	25	165	150	4027 5011 30	
24	53	12	25	167	180	4027 5011 31	
27	60	13	30	219	220	4027 5011 32	
28	60	13	30	222	250	4027 5011 33	
29	60	13	30	222	270	4027 5011 34	
30	66	14	30	245	300	4027 5011 35	
32	66	14	32.5	246	300	4027 5011 36	
34	66	14	32.5	239	300	4027 5011 37	
36	66	14	32.5	275	300	4027 5011 38	
7/16	30	7	25	127	40	4027 5010 50	
1/2	30	7	25	127	40	4027 5010 51	
9/16	35	8	25	132	50	4027 5010 52	
5/8	38	9	25	141	70	4027 5010 53	
11/16	38	9	25	136	80	4027 5010 54	
3/4	42	10	25	144	95	4027 5010 55	
13/16	50	11	25	160	150	4027 5010 56	
7/8	50	11	25	158	150	4027 5010 57	
15/16	53	12	25	176	180	4027 5010 58	
1	53	12	25	172	180	4027 5010 59	
1.1/8	60	13	30	223	220	4027 5010 60	

Box End

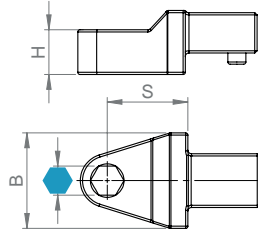


	mm/in	B mm	H mm	S mm	g	Max Nm	Ordering No.
9 x 12							
7	13	8	17.5	38	25	4027 5011 50	
8	13.5	8	17.5	37	35	4027 5011 51	
9	16	8	17.5	35	40	4027 5011 52	
10	18	9	17.5	40	55	4027 5011 53	
11	18.5	9	17.5	44	70	4027 5011 54	
12	20.5	11	17.5	41	85	4027 5011 55	
13	21.5	11	17.5	49	100	4027 5011 56	
14	25	12	17.5	55	115	4027 5011 57	
15	25	12	17.5	52	120	4027 5011 58	
16	26	12	17.5	54	120	4027 5011 59	
17	27	13	17.5	59	120	4027 5011 60	
18	28	13	17.5	56	120	4027 5011 61	
19	30.5	13	17.5	65	120	4027 5011 62	
21	33	15	17.5	71	120	4027 5011 63	
22	34.5	15	17.5	74	120	4027 5011 64	
1/4	13.5	8	17.5	39	25	4027 5010 13	
5/16	13.5	8	17.5	38	35	4027 5010 14	
3/8	18	8	17.5	41	55	4027 5010 15	
7/16	18	9	17.5	41	70	4027 5010 16	
1/2	22	12	17.5	51	100	4027 5010 17	
9/16	25	12	17.5	57	115	4027 5010 18	
5/8	27	13	17.5	61	120	4027 5010 19	
11/16	27	13	17.5	57	120	4027 5010 20	
3/4	30	13	17.5	62	120	4027 5010 21	
13/16	34	14.5	17.5	75	120	4027 5010 22	
7/8	34	15	20	77	120	4027 5010 23	
14 x 18							
13	22.5	11	25	130	100	4027 5011 67	
14	23	11	25	123	110	4027 5011 68	
15	24	11	25	128	120	4027 5011 69	
16	25.5	12	25	133	140	4027 5011 70	
17	27	12	25	135	160	4027 5011 71	
18	29	13	25	134	185	4027 5011 72	
19	30.5	13	25	138	210	4027 5011 73	
20	33	13	25	140	230	4027 5011 74	
21	33	15	25	144	260	4027 5011 75	
22	34.5	15	25	145	300	4027 5011 76	
24	37.5	15	25	153	350	4027 5011 77	
27	42.5	17	25	162	450	4027 5011 78	
30	46	19	25	182	550	4027 5011 79	
32	47.5	19	25	181	650	4027 5011 80	
34	52	19	28	210	650	4027 5011 81	
36	54	19	28	203	700	4027 5011 82	
41	60	20	30	240	750	4027 5011 83	
1/2	30	11	25	134	100	4027 5010 70	
9/16	30	11	25	133	110	4027 5010 71	
5/8	30	12	25	135	140	4027 5010 72	
11/16	30	12	25	136	160	4027 5010 73	
3/4	31	12	25	145	210	4027 5010 74	
13/16	34	15	25	159	260	4027 5010 75	
7/8	35	15	25	156	300	4027 5010 76	

Mechanical Wrenches

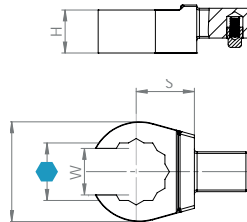
End Fittings CWR

Bits Holders



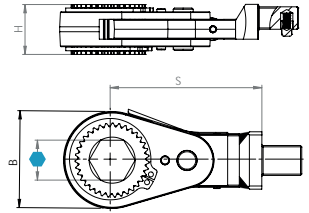
	in	B mm	H mm	S mm	g	Ordering No.
9 x 12	5/16	14	10	17.5	45	4027 5012 10
	1/4	16	12.5	17.5	47	4027 5012 11
14 x 18	5/16	16	12.5	25	112	4027 5012 13

Flared End



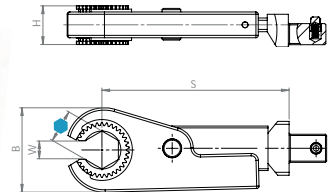
	mm/in	B mm	H mm	S mm	W mm	g	Max Nm	Ordering No.
9 x 12	10	21.5	11	17.5	7.1	57	20	4027 5011 90
	11	22.5	11	17.5	8.6	55	25	4027 5011 91
	12	24.5	12	17.5	9	59	32	4027 5011 92
	13	26	13	17.5	10	55	40	4027 5011 93
	14	27	13	17.5	11	60	50	4027 5011 94
	15	27	13	17.5	12	60	50	4027 5011 95
	16	30.5	13	17.5	13	65	80	4027 5011 96
	17	31.5	13	17.5	14	64	82	4027 5011 97
	18	33	15	17.5	15	74	100	4027 5011 98
	19	34	15	17.5	16	80	115	4027 5011 99
	21	38.5	15	20	17	88	120	4027 5012 00
	22	39.5	15	20	17	92	120	4027 5012 01
	24	40	15	20	18	75	120	4027 5012 02
	27	45	17	25	20	120	140	4027 5012 03
3/8	18	8	17.5	7.1	39	20	4027 5010 30	
7/16	21	12	17.5	8.6	50	25	4027 5010 31	
1/2	26	13	17.5	10	61	32	4027 5010 32	
9/16	27	13	17.5	11	58	50	4027 5010 33	
5/8	30	13	17.5	14	62	80	4027 5010 34	
11/16	30	13	17.5	14	58	82	4027 5010 35	
3/4	34	15	17.5	15.8	71	115	4027 5010 36	

Hexagon Ratchet



	mm/in	B mm	H mm	S mm	g	Max Nm	Ordering No.
9 x 12	10	28	13.5	51	95	25	4027 5012 30
	11	28	13.5	51	95	25	4027 5012 31
	12	28	13.5	51	95	25	4027 5012 32
	13	28	13.5	51	95	25	4027 5012 33
	14	32	16	56	140	35	4027 5012 34
	15	32	16	56	140	35	4027 5012 35
	16	39	20	61	205	70	4027 5012 36
	17	39	20	61	205	70	4027 5012 37
	18	39	20	61	205	70	4027 5012 38
	19	39	20	61	205	70	4027 5012 39
	21	45	23	61	290	85	4027 5012 40
	22	45	23	61	290	85	4027 5012 41
	24	45	23	61	290	85	4027 5012 42

Open Hexagon Ratchet

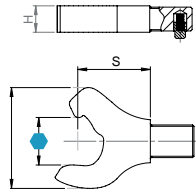


	mm/in	B mm	H mm	S mm	W mm	g	Max Nm	Ordering No.	
9 x 12	8	30	16.5	48	5.1	90	15	4027 5012 50	
	9	30	16.5	48	6.3	90	15	4027 5012 51	
	10	30	16.5	48	6.3	89	15	4027 5012 52	
	11	30	16.5	48	6.3	89	15	4027 5012 53	
	12	36	16.5	81	7.1	200	18	4027 5012 54	
	13	36	16.5	81	7.6	200	18	4027 5012 55	
	14	36	16.5	81	8	200	18	4027 5012 56	
	15	44	20.5	83	9.1	280	45	4027 5012 57	
	16	44	20.5	83	9.6	280	45	4027 5012 58	
	17	44	20.5	83	10	280	45	4027 5012 59	
	18	44	20.5	83	10.5	280	45	4027 5012 60	
	19	44	20.5	83	10.5	280	45	4027 5012 61	
	With reinforced bottom 9 x 12								
	10	30	16.5	48	6.3	91	15	4027 5012 63	
	11	30	16.5	48	6.3	91	15	4027 5012 64	
	12	30	16.5	48	7.1	91	15	4027 5012 65	
	13	30	20.5	48	7.6	91	15	4027 5012 66	

End Fittings CWR

Mechanical Wrenches

Open End with Ratchet Function



	mm/in	B mm	H mm	S mm	g	Ordering No.
9 x 12						
	10	22.5	10	17.5	34	4027 5012 80
	11	24.5	10	21	39	4027 5012 81
	12	26.7	10	21	42	4027 5012 82
	13	30	10	23	49	4027 5012 83
	14	30.5	10	25.5	55	4027 5012 84
	15	32	10	27	60	4027 5012 85
	16	35	10	28	65	4027 5012 86
	17	37	10	29	68	4027 5012 87
	18	38	10	32.5	78	4027 5012 88
	19	41	10	33	90	4027 5012 89
	21	46.5	10	35	100	4027 5012 90
	22	46.5	10	35	97	4027 5012 91
	24	50	10	37.5	115	4027 5012 92
	27	57	10	47.5	156	4027 5012 93
	30	62	10	52.5	182	4027 5012 94
	32	67	12	52.5	234	4027 5012 95
14 x 18						
	17	37	16	28	125	4027 5012 98
	18	41	16	32	12	4027 5012 99
	19	41	16	32.5	130	4027 5013 00
	21	46.5	16	35	150	4027 5013 01
	27	46.5	16	40	198	4027 5013 02
	15	50	16	41	220	4027 5013 03
	16	58	16	43.5	270	4027 5013 04
	17	63	16	52	310	4027 5013 05
	24	66	16	59	336	4027 5013 06
	32	75	16	55	388	4027 5013 07

Setting Key



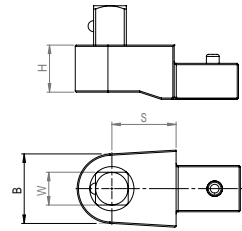
	g	Ordering No.
Setting key	169	4027 5014 00

Blank End



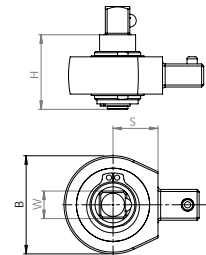
	B mm	H mm	S mm	g	Ordering No.
9 x 12					
	23	14	9	30	4027 5012 20
Assembled	23	14	9	30	4027 5012 21
14 x 18					
	30	21	13	98	4027 5012 23
Assembled	30	21	13	98	4027 5012 24

Fixed Square



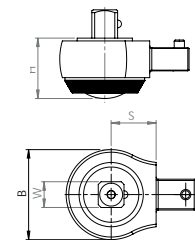
	in	B mm	H mm	S mm	g	Max Nm	Ordering No.
9 x 12							
	1/4	20	14	17.5	76	40	4027 5013 20
	3/8	20	14	17.5	82	80	4027 5013 21
	1/2	20	14	17.5	71	100	4027 5013 22
14 x 18							
	1/2	27	18	25	203	300	4027 5013 24
	3/4	40	25	25	396	650	4027 5013 25

Non-Reversible Ratchet End



	in	B mm	H mm	S mm	g	Max Nm	Ordering No.
9 x 12							
	3/8	38	29.5	17.5	140	80	4027 5013 30
	1/2	38	29.5	17.5	180	100	4027 5013 31
14 x 18							
	1/2	44	29.5	25	230	300	4027 5013 33

Reversible Ratchet End

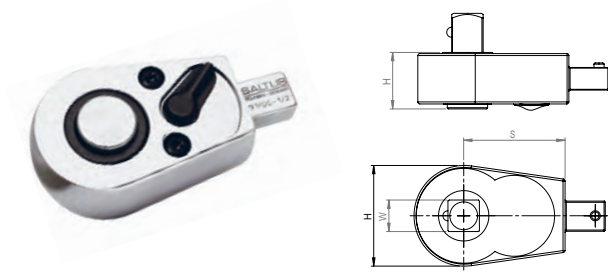


	in	B mm	H mm	S mm	g	Max Nm	Ordering No.
9 x 12							
	1/4	27	27	17.5	68	50	4027 5013 40
	3/8	36.5	25	17.5	140	100	4027 5013 41
	1/2	33.5	37	17.5	150	120	4027 5013 42
14 x 18							
	1/2	41	26	25	320	300	4027 5013 44
	3/4	62	32	46	865	800	4027 5013 45

Mechanical Wrenches

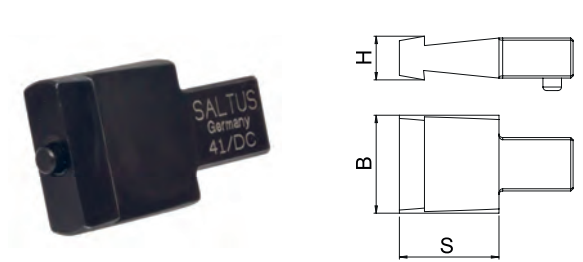
End Fittings CWR

Reversible Ratchet End



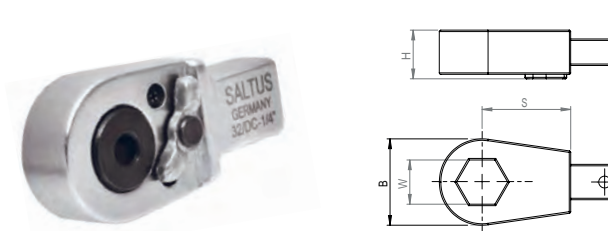
	in	B mm	H mm	S mm	g	Max Nm	Ordering No.
9 x 12	1/4	25	13.5	21.5	77	49	4027 5013 60
	3/8	33.5	17.5	30.5	160	100	4027 5013 61
	1/2	41.5	20.5	37.5	291	120	4027 5013 62
14 x 18	1/2	41.5	20.5	37.5	339	300	4027 5013 64
	3/4	63.5	31	70	1155	650	4027 5013 65

Connectors for Dovetails Inserts



	B mm	H mm	S mm	g	Ordering No.
9 x 12	22	10	21.5	39	4027 5013 90
14 x 18	29	10	26.5	92	4027 5013 91

Ratchet Reversible with Hexagonal Output



	in	B mm	H mm	S mm	g	Max Nm	Ordering No.
9 x 12	1/4	22	14	17.5	60	40	4027 5013 80
	5/16	29	14.5	28	117	80	4027 5013 81

Belknap Adapter

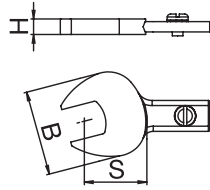


	Type	S mm	g	Ordering No.
9 x 12	J-Shank	24	68	4027 5016 90
	Y-Shank	29	71	4027 5016 91
	X-Shank	31	86	4027 5016 92
	Z- Shank	56	314	4027 5016 93
14 x 18	J-Shank	24	105	4027 5017 00
	Y-Shank	29	104	4027 5017 01
	X-Shank	31	121	4027 5017 02
	Z- Shank	56	349	4027 5017 03

End Fittings BWR

Mechanical Wrenches

Open End



mm/in	B mm	H mm	S mm	g	Max Nm	Ordering No.
BWR 20/35						
7	24	5.5	17.5	23	13	4027 5000 00
8	24	5.5	17.5	25	13	4027 5000 01
9	24	5.5	17.5	25	13	4027 5000 02
10	30	6	24	31	20	4027 5000 03
11	30	6	24	31	24	4027 5000 04
12	33	6	25	31	29	4027 5000 05
13	33	6	25	34	40	4027 5000 06
14	33	6	25	34	45	4027 5000 07
15	35	6	28	34	45	4027 5000 08
16	35	7	28	50	50	4027 5000 09
17	38	7	30	60	60	4027 5000 10
18	38	7	31	60	65	4027 5000 11
19	38	7	31	60	70	4027 5000 12
21	43	7	35	61	95	4027 5000 13
22	43	7	35	61	95	4027 5000 14
24	46	10	35	61	95	4027 5000 15
27	46	10	40	61	95	4027 5000 16
1/4	24	5.5	17.5	23	13	4027 5006 50
5/16	24	5.5	17.5	25	13	4027 5006 51
3/8	24	5.5	17.5	25	13	4027 5006 52
7/16	30	6	24	31	24	4027 5006 53
1/2	33	6	25	34	40	4027 5006 54
9/16	35	6	28	34	45	4027 5006 55
5/8	35	7	28	50	50	4027 5006 56
11/16	38	7	31	60	65	4027 5006 57
3/4	38	7	31	60	70	4027 5006 58
BWR 100						
13	40	7.5	25	75	45	4027 5000 30
14	40	7.5	25	75	45	4027 5000 31
15	40	7.5	25	75	50	4027 5000 32
16	45	10	28	90	55	4027 5000 33
17	45	10	28	110	65	4027 5000 34
18	45	10	28	110	65	4027 5000 35
19	45	10	28	115	75	4027 5000 36
21	46	10	32	115	75	4027 5000 37
22	46	10	32	115	80	4027 5000 38
24	46	10	32	120	100	4027 5000 39
27	55	10	36	120	100	4027 5000 40
1/2	40	7.5	25	75	45	4027 5006 70
9/16	40	7.5	25	75	50	4027 5006 71
5/8	45	10	28	90	55	4027 5006 72
11/16	45	10	28	110	65	4027 5006 73
3/4	45	10	28	115	75	4027 5006 74
13/16	46	10	32	115	75	4027 5006 75
7/8	46	10	32	115	80	4027 5006 76
15/16	46	10	32	120	100	4027 5006 77
1	55	10	36	120	100	4027 5006 78
1 1/8	61	12	43	227	130	4027 5006 79

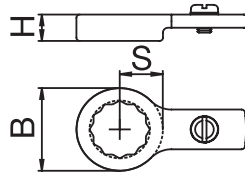
Continued....

mm/in	B mm	H mm	S mm	g	Max Nm	Ordering No.
BWR 240						
16	53	10	34	210	85	4027 5000 60
17	53	10	44	210	85	4027 5000 61
18	53	10	44	210	85	4027 5000 62
19	53	10	44	210	85	4027 5000 63
21	60	10	46	210	85	4027 5000 64
22	60	13	48	290	170	4027 5000 65
24	61	13	41	350	175	4027 5000 66
27	64	15	50	360	180	4027 5000 67
5/8	53	10	34	210	85	4027 5006 90
11/16	53	10	44	210	85	4027 5006 91
3/4	53	10	44	210	85	4027 5006 92
13/16	60	10	46	210	85	4027 5006 93
7/8	60	13	48	290	170	4027 5006 94
15/16	63	14	59	480	360	4027 5006 95
1	72	15	60	580	440	4027 5006 96
1 1/8	75	15	60	595	440	4027 5006 97
BWR 440						
17	55	12	58	375	190	4027 5000 90
18	55	12	58	375	190	4027 5000 91
19	55	12	58	375	190	4027 5000 92
21	62	12	59	440	280	4027 5000 93
22	62	12	59	440	280	4027 5000 94
24	63	14	59	480	360	4027 5000 95
27	72	15	60	580	440	4027 5000 96
30	75	15	60	595	440	4027 5000 97
32	78	15	60	650	440	4027 5000 98
34	82	17	60	670	440	4027 5000 99
36	82	17	62	670	440	4027 5001 00
41	87	20	62	685	440	4027 5001 01
5/8	55	12	58	375	190	4027 5007 10
11/16	55	12	58	375	190	4027 5007 11
3/4	55	12	58	375	190	4027 5007 12
13/16	62	12	59	440	280	4027 5007 13
7/8	62	12	59	440	280	4027 5007 14
15/16	63	14	59	480	360	4027 5007 15
1	72	15	60	580	440	4027 5007 16
BWR 750						
21	62	12	58	600	300	4027 5001 20
22	62	12	58	600	300	4027 5001 21
24	70	14	58	620	320	4027 5001 22
27	75	15	58	700	360	4027 5001 23
30	80	15	58	820	420	4027 5001 24
32	82	17	58	850	490	4027 5001 25
34	86	17	62	860	570	4027 5001 26
36	86	17	62	860	570	4027 5001 27
41	92	20	64	950	620	4027 5001 28
46	97	22	66	980	630	4027 5001 29
13/16	62	12	58	600	300	4027 5007 30
7/8	62	12	58	600	300	4027 5007 31
15/16	70	14	58	620	320	4027 5007 32
1	75	15	58	700	360	4027 5007 33
1 1/8	80	15	58	820	420	4027 5007 34
BWR 1300/2000						
24	70	14	53	950	350	4027 5001 50
27	75	15	53	960	480	4027 5001 51
30	82	17	53	1050	600	4027 5001 52
32	82	17	61	1150	750	4027 5001 53
34	86	18	64	1200	890	4027 5001 54
36	86	18	65	1200	890	4027 5001 55
41	92	20	77	1650	1150	4027 5001 56
46	97	22	80	1800	1450	4027 5001 57
50	104	22	82	1900	1750	4027 5001 58
55	110	22	83	1985	1800	4027 5001 59
60	115	22	86	2000	1850	4027 5001 60
75	170	25	113	3500	2000	4027 5001 61
15/16	70	14	53	950	350	4027 5007 40
1	75	15	53	960	480	4027 5007 41
1 1/8	82	17	53	1050	600	4027 5007 42

Mechanical Wrenches

End Fittings BWR

Box End



mm/in	B mm	H mm	S mm	g	Max Nm	Ordering No.
BWR 20/35						
7	16	6	8	20	25	4027 5001 80
8	16	6	8	20	25	4027 5001 81
9	18	6	9	20	32	4027 5001 82
10	19	7	9.5	22	38	4027 5001 83
11	20	7	10	25	50	4027 5001 84
12	21	7	10.5	25	60	4027 5001 85
13	22	8	11	28	75	4027 5001 86
14	23	8	11.5	30	85	4027 5001 87
15	25	8	12.5	32	85	4027 5001 88
16	27	8	13.5	35	85	4027 5001 89
17	27	8	13.5	35	85	4027 5001 90
18	29	8	14.5	36	85	4027 5001 91
19	29	8	14.5	36	85	4027 5001 92
21	34	10	16	40	85	4027 5001 93
22	34	10	17	40	85	4027 5001 94
24	37	10	18.5	40	85	4027 5001 95
1/4	16	6	8	20	25	4027 5007 50
5/16	16	6	8	20	25	4027 5007 51
3/8	18	6	9	20	32	4027 5007 52
7/16	20	7	10	25	50	4027 5007 53
1/2	22	8	11	28	75	4027 5007 54
9/16	25	8	12.5	32	85	4027 5007 55
5/8	27	8	13.5	35	85	4027 5007 56
11/16	29	8	14.5	36	85	4027 5007 57
3/4	29	8	14.5	36	85	4027 5007 58
BWR 100						
13	23	10	11.5	55	75	4027 5002 10
14	25	10	12.5	58	85	4027 5002 11
15	26	10	13	60	100	4027 5002 12
16	28	12	14	62	100	4027 5002 13
17	28	12	14	65	100	4027 5002 14
18	30	12	15	68	100	4027 5002 15
19	30	12	15	70	100	4027 5002 16
21	32	12	16	70	100	4027 5002 17
22	34	12	17	72	100	4027 5002 18
24	37	14	18.5	90	100	4027 5002 19
1/2	23	10	11.5	55	75	4027 5007 70
9/16	26	10	13	60	100	4027 5007 71
5/8	28	12	14	62	100	4027 5007 72
11/16	30	12	15	68	100	4027 5007 73
3/4	30	12	15	70	100	4027 5007 74
13/16	32	12	16	70	100	4027 5007 75
7/8	34	12	17	72	100	4027 5007 76
15/16	37	14	18.5	90	100	4027 5007 77
1	40	12	24.5	100	100	4027 5007 78

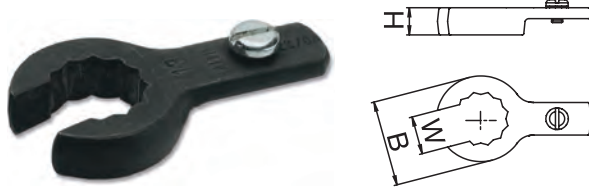
Continued....

mm/in	B mm	H mm	S mm	g	Max Nm	Ordering No.
BWR 240						
16	33	12	31	190	135	4027 5002 40
17	33	12	31	190	135	4027 5002 41
18	33	12	31	195	150	4027 5002 42
19	33	12	31	195	150	4027 5002 43
21	38	12	31	210	200	4027 5002 44
22	38	12	31	210	200	4027 5002 45
24	40	14	31	210	240	4027 5002 46
27	44	14	31	225	240	4027 5002 47
5/8	33	12	31	190	135	4027 5007 90
11/16	33	12	31	195	150	4027 5007 91
3/4	33	12	31	195	150	4027 5007 92
13/16	38	12	31	210	200	4027 5007 93
7/8	38	12	31	210	200	4027 5007 94
15/16	40	14	31	210	240	4027 5007 95
1	44	14	31	225	240	4027 5007 96
BWR 440						
17	36	12	56	300	190	4027 5002 70
18	36	12	56	300	190	4027 5002 71
19	40	12	56	300	190	4027 5002 72
21	40	14	56	315	280	4027 5002 73
22	40	14	56	315	280	4027 5002 74
24	43	14	56	320	420	4027 5002 75
27	47	14	56	335	440	4027 5002 76
30	52	14	56	335	440	4027 5002 77
32	54	14	56	365	440	4027 5002 78
34	58	15	56	375	440	4027 5002 79
36	60	15	56	385	440	4027 5002 80
41	62	15	56	395	440	4027 5002 81
44	72	16	56	483	460	4027 5002 82
5/8	36	12	56	300	190	4027 5008 10
11/16	36	12	56	300	190	4027 5008 11
3/4	40	12	56	300	190	4027 5008 12
13/16	40	14	56	315	280	4027 5008 13
7/8	40	14	56	315	280	4027 5008 14
15/16	43	14	56	320	420	4027 5008 15
1	47	14	56	335	440	4027 5008 16
BWR 750						
21	40	14	58	450	320	4027 5003 00
22	40	14	58	470	320	4027 5003 01
24	43	14	58	500	480	4027 5003 02
27	47	16	58	520	480	4027 5003 03
30	54	16	58	535	700	4027 5003 04
32	56	16	58	565	750	4027 5003 05
34	60	19	58	575	750	4027 5003 06
36	60	19	58	575	750	4027 5003 07
38	60	19	58	565	750	4027 5003 08
41	65	19	58	585	750	4027 5003 09
46	69	19	58	600	750	4027 5003 10
13/16	40	14	58	450	320	4027 5008 30
7/8	40	14	58	470	320	4027 5008 31
15/16	43	14	58	500	480	4027 5008 32
1	47	16	58	520	480	4027 5008 33
BWR 1300/2000						
24	52	18	58	750	520	4027 5003 30
27	56	18	58	760	560	4027 5003 31
30	60	18	58	800	740	4027 5003 32
32	62	18	58	820	950	4027 5003 33
34	62	18	58	850	1200	4027 5003 34
36	70	18	58	850	1200	4027 5003 35
41	70	18	58	940	1800	4027 5003 36
46	78	20	58	1080	2000	4027 5003 37
50	85	22	58	1180	2000	4027 5003 38
55	90	22	58	1250	2000	4027 5003 39
60	95	22	58	1300	2000	4027 5003 40
15/16	52	18	58	750	520	4027 5008 40
1	56	18	58	760	560	4027 5008 41

End Fittings BWR

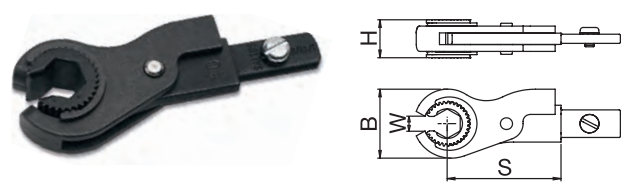
Mechanical Wrenches

Flared End



	B	H	S	W	Max		
mm/in	mm	mm	mm	mm	Nm	g	Ordering No.
BWR 20/35							
8	18	6	9	6	20	16	4027 5003 60
10	21	7	10.5	7	25	16	4027 5003 61
11	21	7	10.5	8.5	25	20	4027 5003 62
12	25	9	12.5	9	32	25	4027 5003 63
13	25	8	12.5	10	32	25	4027 5003 64
14	25	8	12.5	11	32	25	4027 5003 65
15	29	8	14.5	11	35	25	4027 5003 66
17	31.5	10	15.75	14	35	50	4027 5003 67
19	34	10	17	15.8	40	50	4027 5003 68
21	34	10	17	17	42	50	4027 5003 69
22	34	10	17	17	45	50	4027 5003 70
24	38	14	20	18	60	60	4027 5003 71
3/8	21	7	12	8	25	16	4027 5008 50
7/16	21	7	12	8.5	25	20	4027 5008 51
1/2	25	8	14	10	32	25	4027 5008 52
9/16	29	8	14	11	35	25	4027 5008 53
5/8	31.5	10	16	14	35	50	4027 5008 54
11/16	34	10	17.5	15.8	40	50	4027 5008 55
3/4	34	10	18	17	40	50	4027 5008 56
BWR 100							
15/8	32	10	18.5	12	75	50	4027 5008 72
11/16	32	12	18.5	14	78	50	4027 5008 73
3/4	36	12	19.5	16	90	50	4027 5008 74

Open Hexagon Ratchet



	B	H	S	W	Max		
mm/in	mm	mm	mm	mm	Nm	g	Ordering No.
BWR 20/35							
8	30	16.5	48	5.1	85	15	4027 5004 50
9	30	16.5	48	5.6	85	15	4027 5004 51
10	30	16.5	48	6.3	85	15	4027 5004 52
11	30	16.5	48	6.3	85	15	4027 5004 53
12	36	16.5	81	7.1	190	18	4027 5004 54
13	36	16.5	81	7.6	190	18	4027 5004 55
14	36	16.5	81	8	190	18	4027 5004 56
17	42	20.5	73.5	10	260	18	4027 5004 57

Hexagon Ratchet



	B	H	S	Max		
mm	mm	mm	mm	Nm	g	Ordering No.
BWR 20/35						
8	28	13.5	44	25	80	4027 5003 90
10	28	13.5	44	25	80	4027 5003 91
11	28	13.5	44	25	80	4027 5003 92
12	28	13.5	44	25	80	4027 5003 93
13	28	13.5	44	25	80	4027 5003 94
14	32	16	47	35	120	4027 5003 95
15	32	16	47	35	120	4027 5003 96
16	39	20	51	85	180	4027 5003 97
17	39	20	51	85	180	4027 5003 98
18	39	20	51	85	180	4027 5003 99
19	39	20	51	85	180	4027 5004 00
21	45	23	57	85	257	4027 5004 01
22	45	23	57	85	257	4027 5004 02
BWR 100						
15	39	20	51	70	200	4027 5004 20
16	39	20	51	70	200	4027 5004 21
17	39	20	51	70	200	4027 5004 22
18	39	20	51	100	200	4027 5004 23
19	39	20	51	100	200	4027 5004 24

Fixed Square End

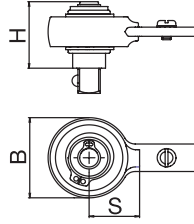


	B	H	S	Max		
in x mm	mm	mm	mm	Nm	g	Ordering No.
BWR 20/35						
1/4x30	24	30	21	25	65	4027 5004 80
1/4x70	24	70	21	25	115	4027 5004 81
3/8x30	24	30	21	85	65	4027 5004 82
3/8x70	27	70	21	85	120	4027 5004 83
1/2x35	24	35	21	85	75	4027 5004 84
1/2x70	24	70	21	85	145	4027 5004 85
BWR 100						
3/8x40	32	40	30	100	75	4027 5004 90
3/8x70	32	70	30	100	240	4027 5004 91
1/2x40	32	40	30	100	175	4027 5004 92
1/2x70	32	70	30	100	245	4027 5004 93
BWR 240						
1/2x40	34	40	31	240	300	4027 5004 98
1/2x70	34	70	31	240	330	4027 5004 99
BWR 440						
1/2x40	48	40	58	440	600	4027 5005 04
1/2x70	48	70	58	440	630	4027 5005 05
3/4x70	48	70	58	440	689	4027 5005 06
BWR 750						
3/4x70	48	70	58	750	775	4027 5005 11
BWR 1300/2000						
3/4x70	73	70	58	1000	1400	4027 5005 16
1x70	73	70	58	2000	1700	4027 5005 17

Mechanical Wrenches

End Fittings BWR

Ratchet End



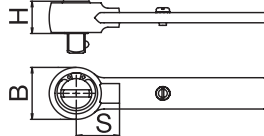
in x mm	B mm	H mm	S mm	g	Max Nm	Ordering No.
BWR 20/35						
1/4x40	36	40	21	145	25	4027 5005 25
1/4x70	38	70	21	165	25	4027 5005 26
3/8x40	36	40	21	145	85	4027 5005 27
3/8x70	36	70	21	170	85	4027 5005 28
1/2x45	36	45	21	150	85	4027 5005 29
1/2x70	36	70	21	195	85	4027 5005 30
BWR 100						
3/8x40	48	40	30	270	100	4027 5005 36
3/8x70	48	70	30	31	100	4027 5005 37
1/2x45	48	40	30	285	100	4027 5005 38
1/2x70	48	70	30	320	100	4027 5005 39
BWR 240						
1/2x45	48	45	31	300	240	4027 5005 44
1/2x70	48	70	31	330	240	4027 5005 45
BWR 440						
3/4x70	72	70	58	1100	440	4027 5005 50
BWR 750						
3/4x70	72	70	58	1250	750	4027 5005 55
BWR 1300/2000						
3/4x70	85	70	58	1700	1000	4027 5005 60
1x80	85	80	58	2000	2000	4027 5005 61

Belknap Adapter



Type	S mm	g	Ordering No.
BWR 20/35			
J-Shank	24	68	4027 5009 50
Y-Shank	29	65	4027 5009 60
BWR 100			
J-Shank	24	85	4027 5009 51
Y-Shank	29	82	4027 5009 61
X-Shank	31	100	4027 5009 70
Z-Shank	56	327	4027 5009 80
BWR 240			
Y-Shank	29	193	4027 5009 62
X-Shank	31	211	4027 5009 71
Z-Shank	56	438	4027 5009 81
BWR 440			
Y-Shank	29	279	4027 5009 63
X-Shank	31	297	4027 5009 72
Z-Shank	56	524	4027 5009 82
BWR 750			
X-Shank	31	455	4027 5009 73
Z-Shank	56	686	4027 5009 83
BWR 1300/2000			
Z-Shank	56	924	4027 5009 84

Reversible Ratchet End



in	B mm	H mm	S mm	g	Max Nm	Ordering No.
BWR 20/35						
1/4	25	26	21	55	25	4027 5005 70
3/8	36	35	21	130	85	4027 5005 71
1/2	36	40	21	135	85	4027 5005 72
BWR 100						
3/8	36	35	30	165	100	4027 5005 77
1/2	36	40	30	175	100	4027 5005 78
BWR 240						
1/2	36	40	31	285	240	4027 5005 83
BWR 440						
3/4	68	56	58	1100	440	4027 5005 88
BWR 750						
3/4	68	70	58	1250	750	4027 5005 93
BWR 1300/2000						
3/4	68	70	58	1500	1000	4027 5005 98
1	68	70	58	1500	1000	4027 5005 99

Setting Key BWR



	g	Ordering No.
Setting key BWR 20 up to 100	97	4027 5006 10
Setting key BWR 240	164	4027 5006 11
Setting key BWR 440	428	4027 5006 12
Setting key BWR 750 up to 2000	603	4027 5006 13

Setting Key SWR



	g	Ordering No.
Setting-Key-Set SWR-30	94	4027 5030 00
Setting-Key-Set SWR-60	171	4027 5030 01
Setting-Key-Set SWR-110	429	4027 5030 02