

The LBD16M and LBP16M are designed with the operator in focus. A lightweight tool with a powerful air motor combined with interchangeable angle heads equals excellent flexibility in any handheld drilling operation. Swap to a new head in a matter of seconds with the easy-to-use quick change mechanism. With the LBD16M and LBP16M, you are always ready to take on any job in ever changing drilling applications.

- Quick change system – Easy-to-use and robust quick change design for high durability.
- Indexable head – The head can be positioned in any direction for maximum accessibility.
- High power lubrication free motor – No more oil aerosols, for a safer and cleaner working environment.



LBP16M

LBD16M

Model	Free speed ^a rpm	Motor speed ^b	Weight lb	Air consumption cfm	Hose size		Air inlet thread NPT	Power hp	Ordering No.
					mm	in			
Straight motor units									
LBD16M-005	500	600	1.25	18.4	6.3	1/4	1/4	0.4	8421 0122 05
LBD16M-010	1000	1200	1.25	18.4	6.3	1/4	1/4	0.4	8421 0122 10
LBD16M-018	1800	2100	1.25	18.4	6.3	1/4	1/4	0.4	8421 0122 18
LBD16M-032	3200	3600	1	18.4	6.3	1/4	1/4	0.4	8421 0122 32
LBD16M-045	4500	5100	1	18.4	6.3	1/4	1/4	0.4	8421 0122 45
LBD16M-055	5500	6200	1	18.4	6.3	1/4	1/4	0.4	8421 0122 55
Pistol motor units									
LBP16M-005	500	600	1.2	20.0	6.3	1/4	1/4	0.45	8421 0124 05
LBP16M-010	1000	1100	1.2	20.0	6.3	1/4	1/4	0.45	8421 0124 10
LBP16M-018	1800	2100	1.2	20.0	6.3	1/4	1/4	0.45	8421 0124 18
LBP16M-033	3300	3700	1.1	20.0	6.3	1/4	1/4	0.45	8421 0124 33
LBP16M-045	4500	5100	1.1	20.0	6.3	1/4	1/4	0.45	8421 0124 45
LBP16M-060	6000	6800	1.1	20.0	6.3	1/4	1/4	0.45	8421 0124 60

^a The free speed is given when used with a 90° angle head. ^b Multiply this value with the Speed ratio to get the free speed of each angle head.

ANGLE HEADS

Model	Angle head	Weight lb	Collet capacity	Thread in	Speed ratio	Length		Ordering No.
						mm	in	
Angle heads with collet – Short								
BHM90SC-5-0	90°	0.5	5.0	–	14:16	65.5	2.58	8421 0123 02
Angle heads with collet – Standard								
BHM90C-5-0	90°	0.36	5.0	–	14:16	88.5	3.48	8421 0123 00
BHM90C-6-6	90°	0.55	6.6	–	14:16	89.6	3.53	8421 0123 05
BHM90C-8-0	90°	0.55	8.0	–	14:17	89.7	3.54	8421 0123 80
BHM45C-5-0	45°	0.44	5.0	–	14:15	117.3	4.62	8421 0123 10
BHM30C-5-0	30°	0.44	5.0	–	14:15	120.4	4.74	8421 0123 20
BHM30C-6-6	30°	0.44	6.6	–	14:15	127	5	8421 0123 15
BHM90ZC-5-0	360°	0.47	5.0	–	7:9	100.8	3.97	8421 0123 30
BHM90ZC-6-6	360°	0.47	6.6	–	7:9	108	4.25	8421 0123 40
Angle heads with collet – Extended								
BHM90EC-5-0	90°	0.58	5.0	–	14:16	128.5	5.06	8421 0123 08
BHM45EC-5-0	45°	0.64	5.0	–	14:15	157.3	6.19	8421 0123 18
BHM30EC-5-0	30°	0.64	5.0	–	14:15	160.4	6.31	8421 0123 28
BHM90Ezc-5-0	360°	0.67	5.0	–	7:9	140.8	5.54	8421 0123 38
Angle head with internal thread – Standard								
BHM90T-1-4	90°	0.36	–	1/4"-28	14:16	88.5	3.48	8421 0123 01
BHM90LT-1-4	90°	0.52	–	1/4"-28	14:16	89.6	3.53	8421 0123 06
BHM45T-1-4	45°	0.44	–	1/4"-28	14:15	118.2	4.65	8421 0123 11
BHM30T-1-4	30°	0.44	–	1/4"-28	14:15	121.1	4.77	8421 0123 21
BHM90ZT-1-4	360°	0.47	–	1/4"-28	7:9	101	3.98	8421 0123 31
Angle head with internal thread – Extended								
BHM90ET-1-4	90°	0.58	–	1/4"-28	14:16	128.5	5.06	8421 0123 09
BHM45ET-1-4	45°	0.64	–	1/4"-28	14:15	157.9	6.22	8421 0123 19
BHM30ET-1-4	30°	0.64	–	1/4"-28	14:15	161.1	6.34	8421 0123 29
BHM90EZT-1-4	360°	0.67	–	1/4"-28	7:9	141	5.55	8421 0123 39
Straight short angle head								
BHM0C-5-0	0°	0.31	5.0	–	1:1	78	3.07	8421 0123 43
BHM0T-1-4	0°	0.31	–	1/4"-28	1:1	78	3.07	8421 0123 44

Angle heads Standard/Extended (pictures shows extended versions)



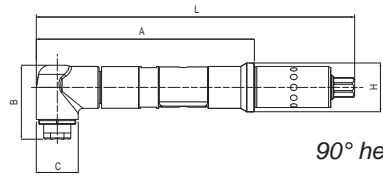
Accessories

Modular Drills

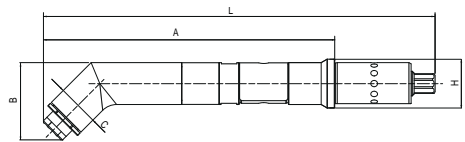
Dimensions

ANGLE HEAD DIMENSIONS

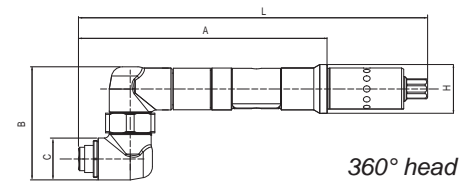
Model	A mm	B mm	C mm	L mm	H mm	Ordering No.
90° heads						
BHM90SC-5-0	65.5	29.8	17	106.2	19.8	8421 0123 02
BHM90C-5-0	88.5	29.8	17	129.2	19.8	8421 0123 00
BHM90C-6-6	90	39.3	20	130.3	20	8421 0123 05
BHM90C-8-0	90	41.1	20	130.3	20	8421 0123 80
BHM90EC-5-0	128.5	29.8	17	169.2	19.8	8421 0123 08
BHM90T-1-4	88.5	30	17	129.2	19.8	8421 0123 01
BHM90LT-1-4	90	36	20	130.3	20	8421 0123 06
BHM90ET-1-4	128.5	30	14	169.2	19.8	8421 0123 09
30° heads						
BHM30C-5-0	120.4	25	17	161	19.8	8421 0123 20
BHM30C-6-6	127.3	32.3	17	168	19.8	8421 0123 15
BHM30EC-5-0	160.4	25.2	17	201	19.8	8421 0123 28
BHM30T-1-4	121.1	26.4	17	161.6	19.8	8421 0123 21
BHM30ET-1-4	161.1	26.4	17	201.8	19.8	8421 0123 29
45° heads						
BHM45C-5-0	117.3	30.5	17	158	19.8	8421 0123 10
BHM45EC-5-0	157.3	30.5	17	198	19.8	8421 0123 18
BHM45T-1-4	118.2	31.4	17	159	19.8	8421 0123 11
BHM45ET-1-4	158.2	31.4	17	199	19.8	8421 0123 19
360° heads						
BHM90ZC-5-0	100.8	45.9	17	141.5	19.8	8421 0123 30
BHM90ZC-6-6	107.3	45.9	17	148	19.8	8421 0123 40
BHM90EZC-5-0	140.8	45.9	17	181.5	19.8	8421 0123 38
BHM90ZT-1-4	101	45.9	17	141.5	19.8	8421 0123 31
BHM90EZT-1-4	141	45.9	17	181.5	19.8	8421 0123 39
Straight heads						
BHM0C-5-0	78	-	17	119	19.8	8421 0123 43
BHM0T-1-4	78	-	17	119	19.8	8421 0123 44
Extension - for chuck						
EXTENSION	35	-	17.5	76	28.5	4110 1692 90



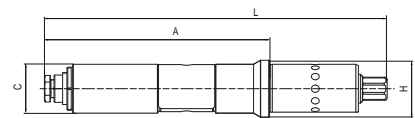
90° head



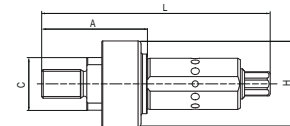
30° and 45° head



360° head



Straight head



Extension for chuck

Optional Accessories



STRAIGHT DRILL HEAD FOR CHUCK

For model	Ordering No.
LBD16M, LBP16M	4110 1692 90

SAFETY LEVERS

For model	Ordering No.
LBD16M	4110 1787 80



SHORT LEVERS

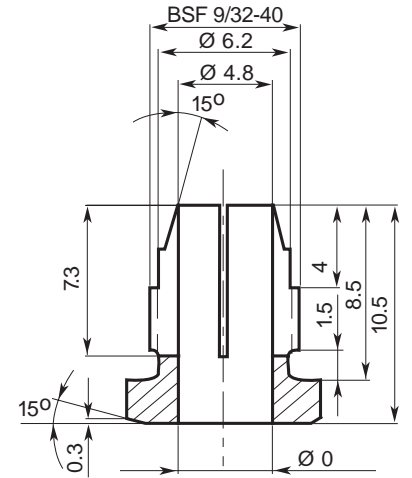
For model	Ordering No.
LBD16M	4210 2306 04

Modular Drills

Accessories

COLLETS FOR 5.0 MM CAPACITY ANGLE HEAD BHMC-5-0 (-30, -45, -90, -90Z)

Capacity mm	Ordering No.	Capacity mm	Ordering No.	Capacity in	Ordering No.
1.0	4110 0438 01	3.4	4110 0438 33	1/16	4110 0438 19
1.5	4110 0438 02	3.5	4110 0438 13	3/32	4110 0438 20
1.8	4110 0438 28	3.6	4110 0438 24	1/8	4110 0438 21
2.0	4110 0438 03	3.7	4110 0438 34	5/32	4110 0438 22
2.1	4110 0438 29	3.8	4110 0438 14	3/16	4110 0438 23
2.2	4110 0438 04	3.9	4110 0438 35		
2.3	4110 0438 30	4.0	4110 0438 15		
2.4	4110 0438 05	4.1	4110 0438 25		
2.5	4110 0438 06	4.2	4110 0438 26		
2.6	4110 0438 07	4.3	4110 0438 36		
2.7	4110 0438 31	4.4	4110 0438 37		
2.8	4110 0438 32	4.5	4110 0438 16		
2.9	4110 0438 08	4.6	4110 0438 38		
3.0	4110 0438 09	4.7	4110 0438 39		
3.1	4110 0438 10	4.8	4110 0438 18		
3.2	4110 0438 11	4.9	4110 0438 40		
3.3	4110 0438 12	5.0	4110 0438 27		

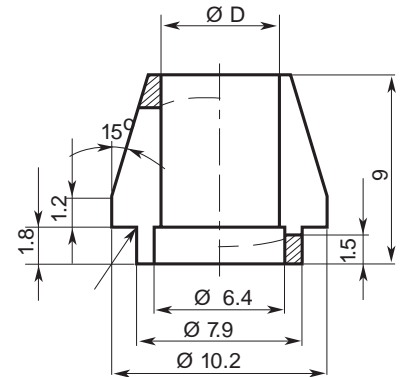


Collets for 5.0 mm (Thread BSF 9/32 -40)

COLLETS FOR 6.6 MM CAPACITY ANGLE HEAD BHMC-6-6 (-30, -90, -90Z)

Capacity mm	Ordering No.	Capacity mm	Ordering No.
1.6	4110 1411 01	4.2	4110 1411 14
1.8	4110 1411 02	4.4	4110 1411 15
2.0	4110 1411 03	4.6	4110 1411 16
2.2	4110 1411 04	4.8	4110 1411 17
2.4	4110 1411 05	5.0	4110 1411 18
2.6	4110 1411 06	5.2	4110 1411 19
2.8	4110 1411 07	5.4	4110 1411 20
3.0	4110 1411 08	5.6	4110 1411 21
3.2	4110 1411 09	5.8	4110 1411 22
3.4	4110 1411 10	6.0	4110 1411 23
3.6	4110 1411 11	6.2	4110 1411 24
3.8	4110 1411 12	6.4	4110 1411 25
4.0	4110 1411 13	6.6	4110 1411 26

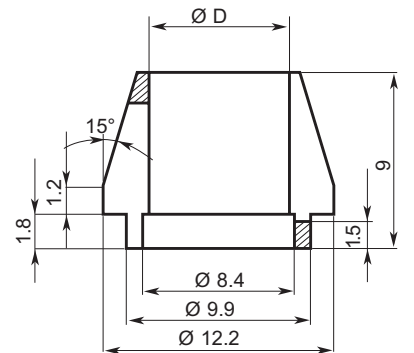
Collet nut 4110 1410 00, to be ordered separately.



Collets for 6.6 mm

COLLETS FOR 8.0 MM CAPACITY ANGLE HEAD BHMC-8-0 (-90)

Capacity mm	Ordering No.	Capacity mm	Ordering No.
6.8	4110 1812 01	7.6	4110 1812 05
7.0	4110 1812 02	7.8	4110 1812 06
7.2	4110 1812 03	8.0	4110 1812 07
7.4	4110 1812 04		



Collets for 8.0 mm



Service Kits

LBD16M 4081 0322 90

LBP16M 4081 0271 90