



SIA20F

MACHINE TENDING | PART TRANSFER | INJECTION MOLDING
ASSEMBLY | PACKAGING | INSPECTION

KEY BENEFITS

Slim, 7-axis design optimizes space; provides “human-like” flexibility and range of motion, even in tight spaces

Mounts virtually anywhere in any orientation

Can be used in environments that are hazardous to humans

Labor savings justifies capital investment

SPECIFICATIONS

20 kg maximum payload

1,498 mm vertical reach

910 mm horizontal reach

±0.1 mm repeatability

CONTROLLERS



DX200



FS100



MLX200

COMPACT, LEAN AND POWERFUL ARM

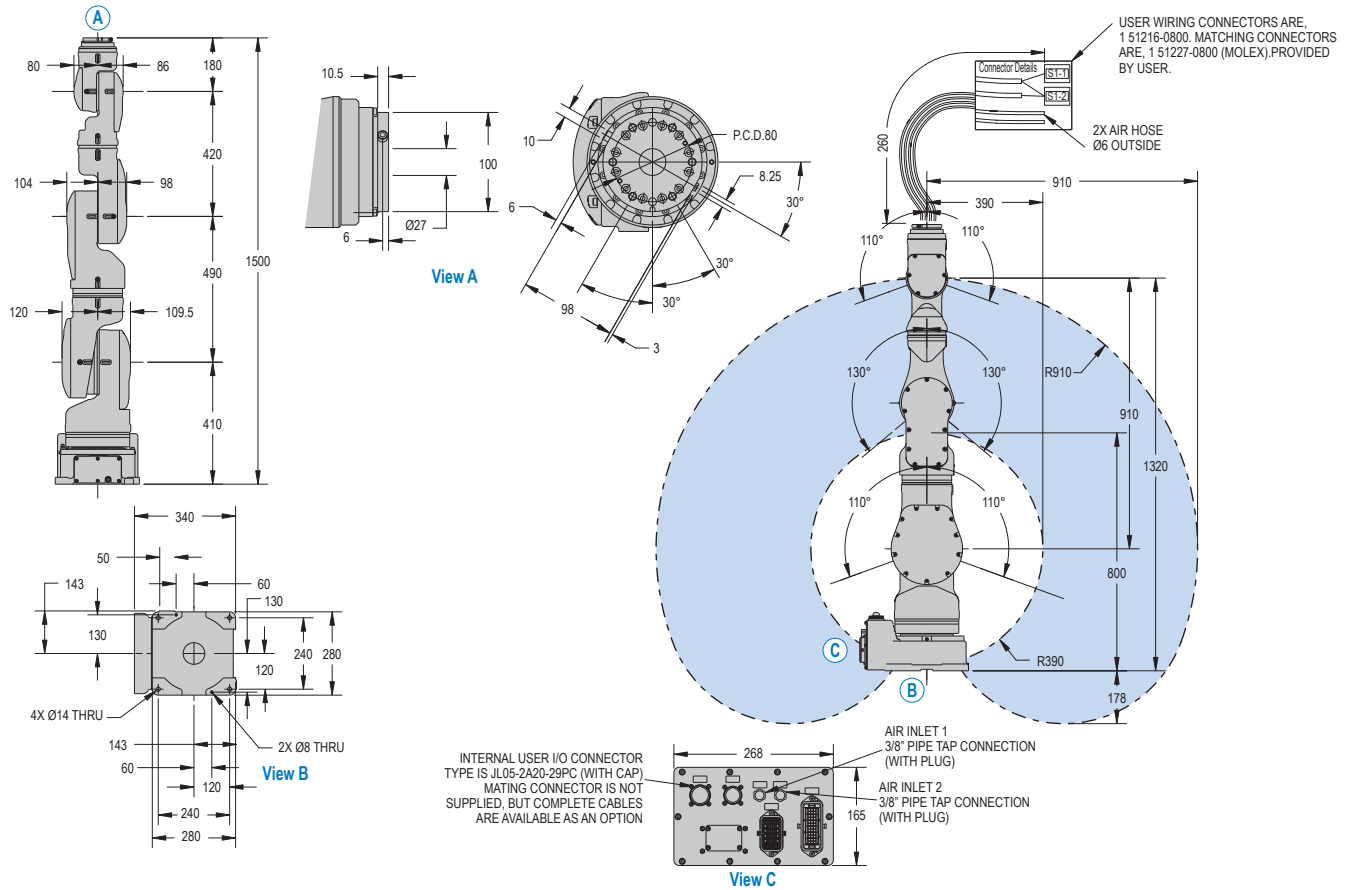
- 7-axis actuator-based design and best-in-class wrist performance characteristics provide amazing freedom of movement, coupled with ability to maneuver in very tight areas.
- Superior dexterity enables robot to reorient elbow(s) without affecting hand position or causing self-interference.
- Agile, versatile robot opens up a wide range of industrial applications to robots; ideal for assembly, injection molding, inspection, machine tending and a host of other operations.
- 20 kg payload; 1,498 mm vertical reach; 910 mm horizontal reach; ±0.1 mm repeatability.
- Slim, compact and powerful – robot can straighten vertically to take up only one square foot of floorspace and is only 330 mm wide at widest point.
- Short axis lengths and extreme motion flexibility allow slim manipulator to be positioned out of normal working area (i.e. floor-, ceiling-, wall-, incline- or machine-mounted) without limiting motion range of any axis.

- Mounting SIA20F robot between two machine tools provides open access to machines for fixture maintenance, adjustment or testing.
- Operator has clear access to machine operator station for entering offsets, maintenance or other operations.

FS100 CONTROLLER

- Small, compact controller.
- 470 mm wide, 200 mm high, 420 mm deep.
- Designed for packaging and small parts handling robots with payloads of 20 kg and under.
- Compatible with integrated MotoSight™ 2D vision (optional).
- Improved communication speeds and functionality.
- High-speed I/O response and high-resolution timers.
- Open architecture enables software customization in widely accepted environments such as C, C++, C# and .NET.
- Uses similar programming pendant hardware as DX200 controller, providing a consistent programming interface.

SIA20F ROBOT



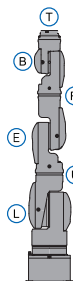
All dimensions are metric (mm) and for reference only.
Request detailed drawings for all design/engineering requirements.

SPECIFICATIONS

Axes	Maximum motion range [°]	Maximum speed [°/sec.]	Allowable moment [N·m]	Allowable moment of inertia [kg·m ²]	Controlled axes	
S	±180	130	-	-	Maximum payload [kg]	7
L	±110	130	-	-	Repeatability [mm]	20
E	±170	170	-	-	Horizontal reach [mm]	±0.1
U	±130	170	-	-	Vertical reach [mm]	910
R	±180	200	58.8	4	Protection - IP rating XP Package (optional)	1,498
B	±110	200	58.8	4	Weight [kg]	IP54 Base; IP64 Body; IP67 Wrist
T	±180	400	29.4	2	Power requirements	120
					Power rating [kVA]	1- or 3-phase; 200/230 VAC at 50/60 Hz
						2.2

OPTIONS

- Wide variety of fieldbus cards
- Vision systems
- Robot base I/O cables
- External axis kit
- Material handling software package
- Conveyor tracking
- MotoFit™ force sensing package



AXES LEGEND

- S-Axis: Turning/Sweep
- L-Axis: Lower Arm
- E-Axis: Elbow
- U-Axis: Upper Arm
- R-Axis: Wrist Roll
- B-Axis: Bend / Pitch / Yaw
- T-Axis: Wrist Twist

Yaskawa America, Inc.
Motoman Robotics Division

100 Automation Way
Miamisburg, OH 45342
Tel: 937.847.6200
Fax: 937.847.6277

motoman.com

YASKAWA