

ToolsNet 8 is a data collection and process improvement software application for use with Power Focus, Pulsor Focus, PowerMACS and STWrench with support for other controllers over ToolsNet open protocol. Combined, these products provide total control of the assembly process, providing a platform for quality improvements. Historical data, statistics and capability indexes can be accessed at any time via a standard web browser such as Microsoft Internet Explorer. ToolsNet is the complete assembly process improvement tool.

### TRACEABILITY MINIMIZES RECALL COSTS

The production can be followed in real-time through the dashboard or monitored through different reports such as the Result List report or Product List report which provides information of every tightening related to a specified period or product. In the event of warranty recalls, the result database provides access to critical information which can easily minimize the extent of any recall leading to an overnight payback on your investment.



### THE RIGHT SOLUTION FOR YOUR NEEDS

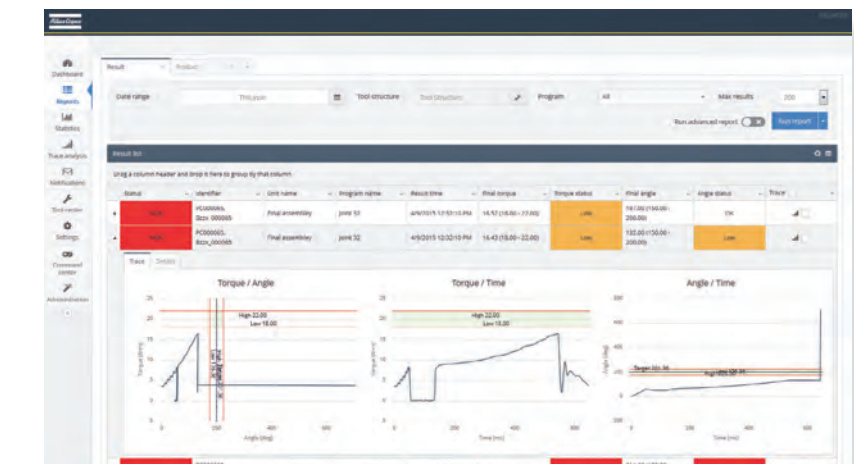
ToolsNet 8 is divided in three different packages to cover different needs.

#### REPORTS

Take the first step in traceability by collecting all tightening results and storing them in a secure database system. Legal documentation and process improvements can be handled by running several pre-formatted reports specially designed to save user time and effort.

#### ALERT

Extend the usage of available information by collecting all production events as they occur on the assembly line, in real time. Generate reports to identify events that are happening often and trigger emails to the right personnel based on event distribution rules you create. Be always on the alert for quality variation and workstations that require preventative or corrective tool maintenance.



#### ANALYSIS

The analysis package adds advanced statistical capabilities making it possible to search for variations when it comes to large amounts of production data. Another feature that is added with the analy-

sis package is tool center which makes it possible to track detailed information about the tools that are used in production ensuring that they are serviced and calibrated on time.

# Station Software

# Quality Integrated Fastening

Software	Ordering No.	Upgrade Ordering No.
<b>ToolsNet 8 - Reports</b>		
		<b>Upgrade<sup>1</sup></b>
5 Spindle license	8092 1710 05	8092 1810 05
10 Spindle license	8092 1710 10	8092 1810 10
25 Spindle license	8092 1710 25	8092 1810 25
50 Spindle license	8092 1710 50	8092 1810 50
75 Spindle license	8092 1710 75	8092 1810 75
125 Spindle license	8092 1710 80	8092 1810 80
200 Spindle license	8092 1710 85	8092 1810 85
350 Spindle license	8092 1710 90	8092 1810 90
500 Spindle license	8092 1710 95	8092 1810 95
Plant Spindle license	8092 1710 00	8092 1810 00
<b>ToolsNet 8 - Alerts</b>		
		<b>Upgrade<sup>2</sup></b>
5 Spindle license	8092 1711 05	8092 1811 05
10 Spindle license	8092 1711 10	8092 1811 10
25 Spindle license	8092 1711 25	8092 1811 25
50 Spindle license	8092 1711 50	8092 1811 50
75 Spindle license	8092 1711 75	8092 1811 75
125 Spindle license	8092 1711 80	8092 1811 80
200 Spindle license	8092 1711 85	8092 1811 85
350 Spindle license	8092 1711 90	8092 1811 90
500 Spindle license	8092 1711 95	8092 1811 95
Plant Spindle license	8092 1711 00	8092 1811 00
<b>ToolsNet 8 - Analysis</b>		
		<b>Upgrade<sup>3</sup></b>
5 Spindle license	8092 1712 05	8092 1812 05
10 Spindle license	8092 1712 10	8092 1812 10
25 Spindle license	8092 1712 25	8092 1812 25
50 Spindle license	8092 1712 50	8092 1812 50
75 Spindle license	8092 1712 75	8092 1812 75
125 Spindle license	8092 1712 80	8092 1812 80
200 Spindle license	8092 1712 85	8092 1812 85
350 Spindle license	8092 1712 90	8092 1812 90
500 Spindle license	8092 1712 95	8092 1812 95
Plant Spindle license	8092 1712 00	8092 1812 00
<b>Operator guidance</b>		
1 User license	8092 1185 01	

<sup>1</sup> ToolsNet 4000 Reports is required.

<sup>2</sup> ToolsNet 4000 Alerts is required.

<sup>3</sup> ToolsNet 4000 History is required.

**NOTE:** Check for availability on your market.