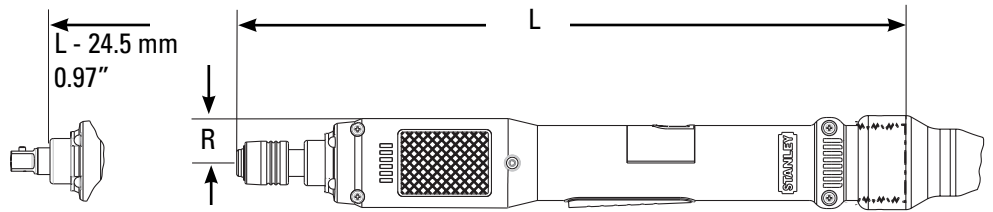


E Series Inline PTS Lever

Inline Push-to-Start (PTS) Lever Tools (0.8 to 17 Nm)

PTS Tool Options

Output Options	Part No.
1/4" Square Drive	20D119305
3/8" Square Drive	20D109003
1/4" Quick Change	20D109004
3/8" SD Socket Lock Pin	Part No.
Standard	20D227800
Rounded (Ball Detent)	20D227801
Reaction Components	Part No.
Mounting Collar Kit	20K101700
Suspension Bail	Part No.
Wire Bail	A3061
Handle Options	Part No.
Rubber Grip	20H207915
Heavy Duty Cable Adapter	20H103100

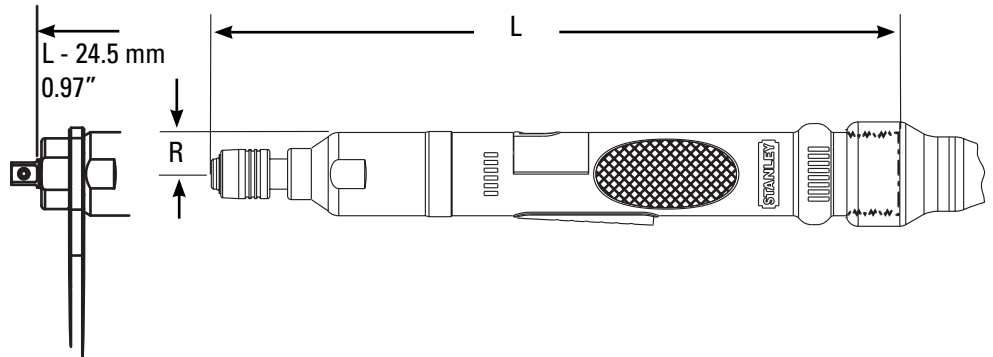


Model	Rated Speed		Torque		"R" Side to Center		"L" Length		Weight		Output
	RPM	Nm	lb ft	mm	in	mm	in	kg	lb	Standard	
E12LP-4	2535	4	3	21	0.8	314	12.3	0.74	1.63	1/4" QC	
E12LP-6	1620	6	4.4	21	0.8	314	12.3	0.74	1.63	1/4" QC	
E12LP-10	1280	10	7.4	21	0.8	314	12.3	0.74	1.63	1/4" QC	
E12LP-13	880	13	9.5	21	0.8	314	12.3	0.74	1.63	1/4" QC	
E12LP-17	610	17	12.5	21	0.8	314	12.3	0.74	1.63	1/4" QC	

Inline Tool Options

Output Options	Part No.
3/8" Square Drive	20D109008
1/4" Quick Change	20D109006
1/4" Square Drive	20D109007
3/8" SD Socket Lock Pin	Part No.
Standard	20D227800
Rounded (Ball Detent)	20D227801
Reaction Bar	Part No.
Reaction Bar, Aluminum	20K100103
Reaction Bar, Steel	20K100104
Spacer	20D217000
Suspension Bails ***	Part No.
Wire Bail	A3061
Swivel	20K101402
Handle Options	Part No.
Rubber Grip	20H207910
Extended Lever	20H102201
Heavy Duty Cable Adapter	20H103100
Light Option	Part No.
E12 LED Flexible Light Kit	20K101804
E12 LED Stationary Light Kit	20S113202

Inline Lever Tools (0.8 to 17 Nm)



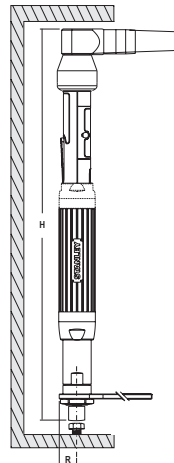
Model	Rated Speed		Torque		"R" Side to Center		"L" Length		Weight		Output
	RPM	Nm	lb ft	mm	in	mm	in	kg	lb	Standard	
E12LB-4	2535	4	3	18	0.7	282	11.1	0.7	1.54	1/4" QC	
E12LB-6	1620	6	4.4	18	0.7	282	11.1	0.7	1.54	1/4" QC	
E12LB-10	1280	10	7.4	18	0.7	282	11.1	0.7	1.54	1/4" QC	
E12LB-13	880	13	9.5	18	0.7	282	11.1	0.7	1.54	1/4" QC	
E12LB-17	610	17	12.5	18	0.7	282	11.1	0.7	1.54	1/4" QC	

*** Suspension bails on page 174

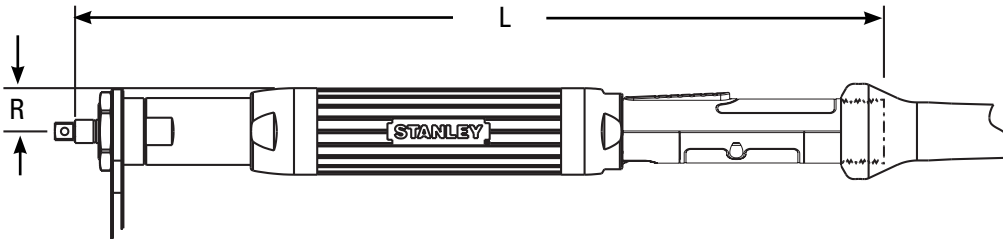
E/ EA Series Inline Lever



Inline Lever Tools (1.4 to 40 Nm)



Workspace

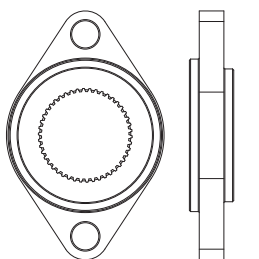


Inline Tool Options - LB

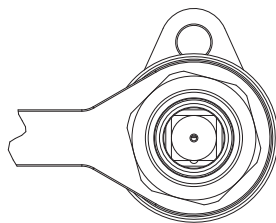
Output Options	Part No.
3/8" 24-Thread	20D100701
3/8" Square Drive	20D100600
3/8" Square Drive x 8" Extension	20D100702
1/4" Quick Change (17 Nm max)	20D101100
Lock Nut Options	Part No.
Lock Nut	F3697
Pinch Point	20D243501
Guided Collar	20D243502
Reaction Bar	Part No.
Reaction Bar, Aluminum	F3698
Reaction Bar, Steel	20K100100
Base Mount Bracket	A8606
Mounting Flange-B	20K101000
3/8" SD Socket Lock Pin	Part No.
Standard	20D227800
Rounded (Ball Detent)	20D227801
Suspension Bails***	Part No.
Wire Bail	A3061
Swivel	20K101400
Standard	B3432
Handle Options	Part No.
EA Tool Rubber Grip	20H207910
E Tool Rubber Grip	20H207207
EA Tool Front Facing Lever	20H100008
E Tool Front Facing Lever	20H100005
Motor Options	Part No.
E Tool Cooling Fan Kit	20M102600

Model	Rated Speed		Torque		"R" Side to Center		"L" Length		Weight		Output
	RPM	Nm	lb ft	mm	in	mm	in	kg	lb	Standard	
EA23LB-7	3140	7	5.1	21	0.8	386	15.2	1.3	2.9	3/8" SD	
E23LB-8	2245	8	5.9	24	0.9	402	15.8	1.4	3.1	3/8" SD	
EA23LB-12	1390	12	8.9	21	0.8	401	15.8	1.3	2.9	3/8" SD	
EA33LB-15	3465	15	11	21	0.8	412	16.2	1.4	3.1	3/8" SD	
E23LB-16	1000	16	11.8	24	0.9	402	15.8	1.4	3.1	3/8" SD	
EA23LB-21	965	21	15.5	21	0.8	401	15.8	1.3	2.9	3/8" SD	
E23LB-21	785	21	15.5	24	0.9	417	16.4	1.6	3.5	3/8" SD	
EA33LB-25	1530	25	18.4	21	0.8	427	16.8	1.4	3.1	3/8" SD	
EA23LB-31	665	31	22.9	21	0.8	401	15.8	1.3	2.9	3/8" SD	
E23LB-31	540	31	22.9	24	0.9	417	16.4	1.6	3.5	3/8" SD	
EA33LB-32	1210	32	23.6	21	0.8	427	16.8	1.4	3.1	3/8" SD	
E23LB-32	1125	32	23.6	24	0.9	442	17.4	1.7	3.8	3/8" SD	
EA33LB-40	1065	40	29.5	21	0.8	427	16.8	1.4	3.1	3/8" SD	
E33LB-40	890	40	29.5	24	0.9	442	17.4	1.7	3.8	3/8" SD	

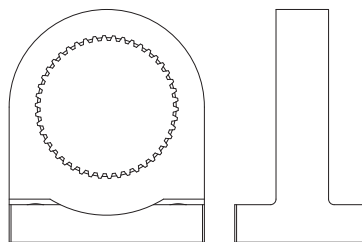
Mounting / Reaction Options



Optional Mounting Flange



Reaction Bar / Bail



Optional Base Mount Bracket

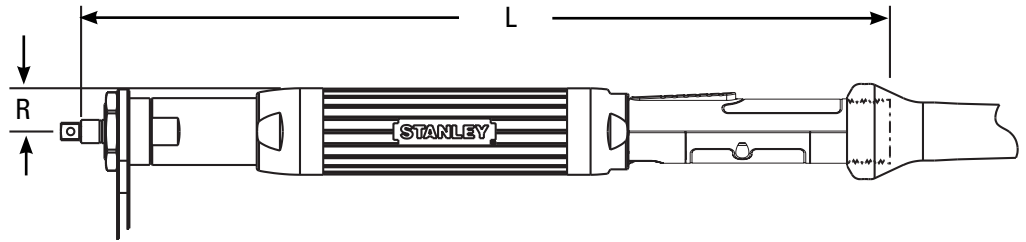
*** Suspension bails on page 174

E/ EA Series Inline Lever

Inline Tool Options - LB1

Output Options	Part No.
1/2" Square Drive x 6" Extension	20D101003
1/2" SD Socket Lock Pin	Part No.
Standard	K4024
Rounded (Ball Detent)	K4050
2-Hand Anti-Tiedown Switch	Part No.
E34/44/54 Tools	20K400002
EA Tools	Add TH
Reaction Components	Part No.
Reaction Bar	20K100000
Mounting Flange	20K100300
Base Mount Bracket	20K100500
Suspension Bail***	Part No.
Wire Bail	A3061
Swivel Bail	20K200000
Handle Options	Part No.
E Tool Rubber Grip	20H207207
EA Tool Rubber Grip	20H207910
E Tool Front Facing Lever	20H100005
EA Tool Front Facing Lever	20H100008

Inline Lever Tools (12 to 100 Nm)

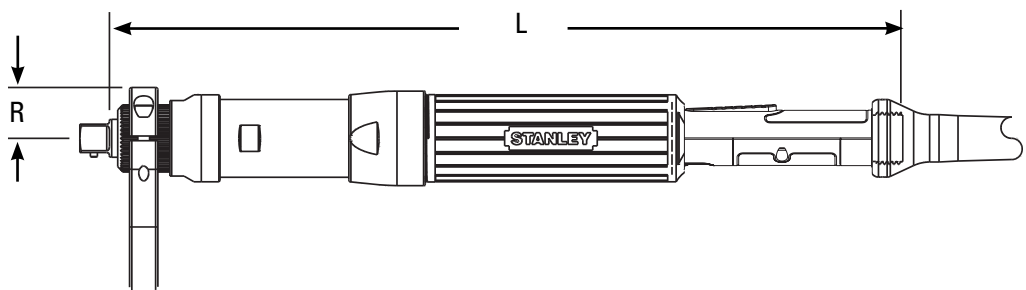


Model	Rated Speed		Torque		"R" Side to Center		"L" Length		Weight		Output
	RPM	Nm	lb ft	mm	in	mm	in	kg	lb	Standard	
EA34LB1-60	745	60	44	25	1	463	18.2	1.9	4.2	1/2" SD	
E34LB1-60	605	60	44	32	1.25	478	18.8	2.4	5.2		
E44LB1-66	885	66	49	32	1.25	487	19.2	2.9	6.4		
EA34LB1-74	490	74	55	25	1	463	18.2	1.9	4.2		
E34LB1-74	490	74	55	32	1.25	478	18.8	2.4	5.2		
E44LB1-100	590	100	74	32	1.25	487	19.2	2.9	6.4		
EA34LB1-100	365	100	74	25	1	463	18.2	1.9	4.2		
E34LB1-100	365	100	74	32	1.25	478	18.8	2.4	5.2		

Inline Tool Options - LB2

Output Options	Part No.
5/8" Square Drive	20D102502
3/4" Square Drive x 8" Extension	20D102603
3/4" Square Drive x 12" Extension	20D102604
Socket Lock Pin	Part No.
Standard 3/4"	A5075
Standard 5/8"	A4026
Rounded (Ball Detent)	20R202300
2-Hand Anti-Tiedown Switch	Part No.
E55 Tools	20K400008
Reaction Components	Part No.
Reaction Bar	20K100200
Reaction Bar - Heavy Duty	20K100202
Mounting Flange	20K100700
Base Mount Bracket	20K100600
Suspension Bail***	Part No.
Wire Bail	A3061
Swivel Bail	20K200100
Handle Options	Part No.
Rubber Grip	20H207207
Front Facing Lever	20H100105

Inline Lever Tools (32 to 250 Nm)



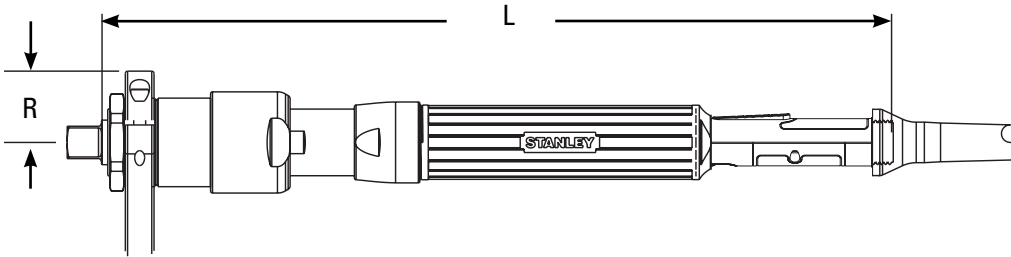
Model	Rated Speed		Torque		"R" Side to Center		"L" Length		Weight		Output
	RPM	Nm	lb ft	mm	in	mm	in	kg	lb	Standard	
E55LB2-127	720	127	94	34	1.35	560	22.1	4.7	10.3	3/4" SD	
E45LB2-160	345	160	118	34	1.35	533	21	4.4	9.6		
E55LB2-200	475	200	147	34	1.35	560	22.1	4.7	10.3		
E55LB2-250	380	250	184	34	1.35	560	22.1	4.7	10.3		
E45LB2-250	220	250	184	34	1.35	533	21	4.4	9.6		

*** Suspension bails on page 174

E/ EA Series Inline Lever



Inline Lever Tools (64 to 2005 Nm)

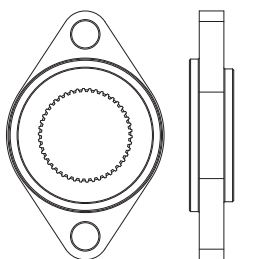


Model	Rated Speed		Torque		"R" Side to Center		"L" Length		Weight		Output
	RPM	Nm	lb ft	mm	in	mm	in	kg	lb	Standard	
E55LB3-322	230	322	237	32	1.25	573	22.5	5.3	11.5	3/4" SD 1" SD	
E55LB4-471	185	471	347	44	1.7	621	24.4	7.4	16.3		
E55LB4-623	140	623	459	44	1.7	621	24.4	7.4	16.3		
E55LB5-1023	75	1023	754	48	1.9	651	25.6	9.6	21.1		
E55LB5-1637	45	1637	1207	48	1.9	683	26.9	12	26.4		
E55LB5-2005	35	2005	1479	48	1.9	683	26.9	12	26.4		

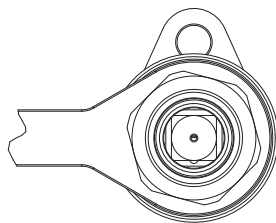
Inline Tool Options - LB3/4/5

Output Options	Part No.
B3 3/4" SD with Ball Retainer	20D104502
B4 1" SD with 1 1/2" Extension	20D208302
Lock Nut Options	Part No.
Lock Nut - B3	B4484
2-Hand Anti-Tiedown Switch	Part No.
E55 Tools	20K400008
Reaction Components	Part No.
Reaction Bar - B3	B4487
Reaction Bar - B4, B5 <1500 Nm	F4192
Reaction Bar - B5 >1500 Nm	J4228
Base Mount Bracket - B3	H1140
Mounting Flange - B3	M4329
Mounting Flange - B4	20K101100
Mounting Flange - B5	20K100900
Socket Lock Pin	Part No.
Standard - B3	A5075
Rounded (Ball Detent) - 3/4", 1" SD	20R202300
Suspension Bails***	Part No.
Wire Bail	A3061
Swivel	20K200100
Handle Options	Part No.
E Tool Rubber Grip	20H207207
E Tool Front Facing Lever	20H100105

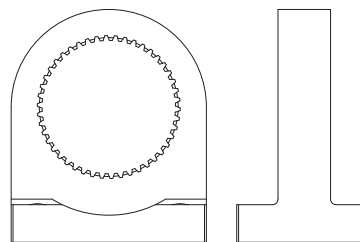
Mounting / Reaction Options



Optional Mounting Flange



Reaction Bar / Bail



Optional Base Mount Bracket

Guided Collar selection on page 175
*** Suspension bails on page 174