

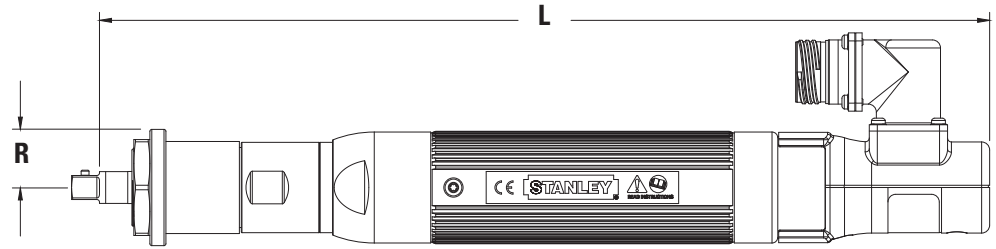
EB Series - Inline Fixtured Tools

Inline Fixtured Tools (5.6 to 120 Nm)

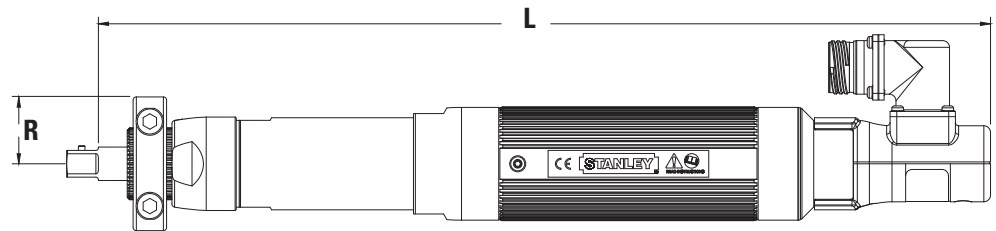
EB Inline Fixtured Options

EB33

Reaction Device	Part No.
Reaction Bar, Aluminum	F3698
Reaction Bar, Steel	20K100100
Base Mount Bracket	A8606
Mounting Flange-B	20K101000
Suspension Bails	Part No.
Wire Bail	A3061
Swivel	20K101400
Standard	B3432
3/8" SD Socket Lock Pin (EB33)	Part No.
Standard	20D227800
Rounded (Ball Detent)	20D227801



	Rated Speed	Torque		"R" Side to Center		"L" Length		Weight		Output
Model	RPM	Nm	lb ft	mm	in	mm	in	kg	lb	Standard
EB33MB-28	1590	28	20.6	24	0.93	359	14.1	1.89	4.15	3/8" SD
EB33MB-40	1120	40	29.5	24	0.93	385	15.1	1.89	4.15	



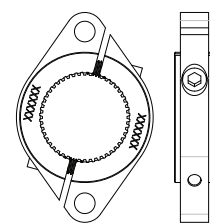
EB Inline Fixtured Options

EB34, EB44

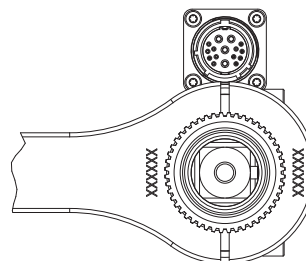
Reaction Device	Part No.
Reaction Bar, Steel	20K100100
Base Mount Bracket	20K100500
Mounting Flange-B	20K100300
1/2" SD Socket Lock Pin	Part No.
Standard	20D227800
Rounded (Ball Detent)	20D227801

	Rated Speed	Torque		"R" Side to Center		"L" Length		Weight		Output
Model	RPM	Nm	lb ft	mm	in	mm	in	kg	lb	Standard
EB34MB1-55	830	55	40.5	32	1.03	421	16.6	2.2	4.84	1/2" SD
EB44MB1-80	895	80	59	32	1.03	421	16.6	2.7	5.94	
EB44MB1-120	557	120	88.5	32	1.03	421	16.6	2.7	5.94	

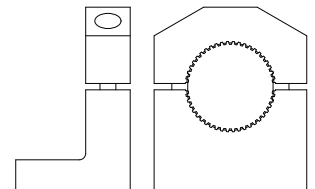
Mounting / Reaction Options



Optional Flange
Mount Bracket



Standard Reaction Bar

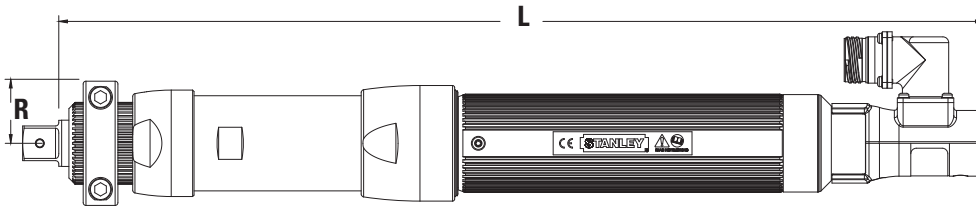


Optional Base Mount Bracket

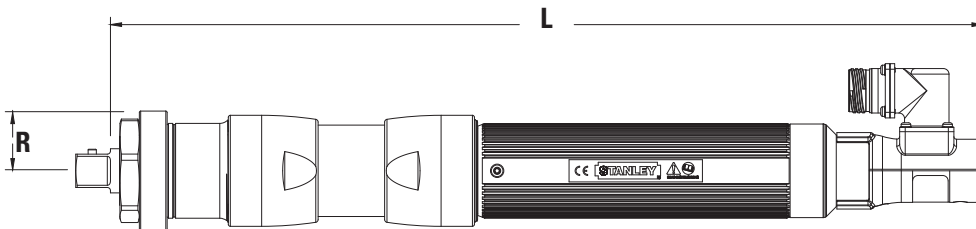
EB Series - Inline Fixtured Tools

STANLEY

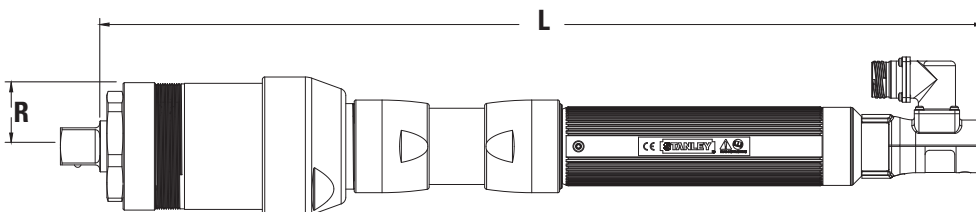
Inline Fixtured Tools (28 to 2000 Nm)



	Rated Speed	Torque		"R" Side to Center		"L" Length		Weight		Output
Model	RPM	Nm	lb ft	mm	in	mm	in	kg	lb	Standard
EB45MB2-140	465	140	103	34	1.34	475	18.7	3.6	7.92	3/4" SD
EB55MB2-170	640	170	125	34	1.34	475	18.7	4.3	9.46	3/4" SD
EB45MB2-190	355	190	140	34	1.34	475	18.7	4.3	9.46	3/4" SD
EB55MB2-250	400	250	184	34	1.34	475	18.7	5.3	11.7	3/4" SD



	Rated Speed	Torque		"R" Side to Center		"L" Length		Weight		Output
Model	RPM	Nm	lb ft	mm	in	mm	in	kg	lb	Standard
EB55MB3-320	310	320	236	35	1.38	517	20.4	5.5	12.1	3/4" SD



	Rated Speed	Torque		"R" Side to Center		"L" Length		Weight		Output
Model	RPM	Nm	lb ft	mm	in	mm	in	kg	lb	Standard
EB55MB4-460	220	460	339	44	1.7	564	22.2	7.5	16.8	1" SD
EB55MB4-620	165	620	457	44	1.7	564	22.2	7.5	16.8	1" SD
EB55MB5-800	125	800	590	48	1.9	575	22.6	9	19.8	1" SD
EB55MB5-1100	80	1100	811	48	1.9	598	23.6	10.1	22.3	1" SD
EB55MB5-1500	60	1500	1106	48	1.9	625	24.6	10.1	22.3	1" SD
EB55MB5-2000	50	2000	1475	48	1.9	625	24.6	10.1	22.3	1" SD

EB Inline Fixtured Options

EB45, EB55 (MB2 Models)

Reaction Device	Part No.
Reaction Bar, Steel	20K100200
Base Mount Bracket	20K100600
Mounting Flange-B	20K100700
3/4" SD Socket Lock Pin	Part No.
Standard	20D227800
Rounded (Ball Detent)	20D227802

EB Inline Fixtured Options

EB55MB3 Model

Reaction Device	Part No.
Reaction Bar, Steel	B4487
Base Mount Bracket	H1140
Mounting Flange-B	M4329
3/4" SD Socket Lock Pin	Part No.
Standard	20D227800
Rounded (Ball Detent)	20D227802

EB Inline Fixtured Options

EB55MB4 & 5 Models

Reaction Device	Part No.
Reaction Bar, Steel	F4192
Base Mount Bracket	F4201
Mounting Flange-B	20K101100
1" SD Socket Lock Pin	Part No.
Standard	20D227800
Rounded (Ball Detent)	20D227802