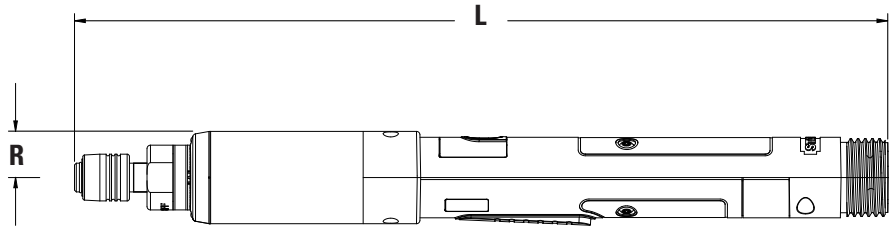


EB Series - Inline PTS Lever

Inline Push-to-Start (PTS) Lever Tools (0.4 to 14 Nm)



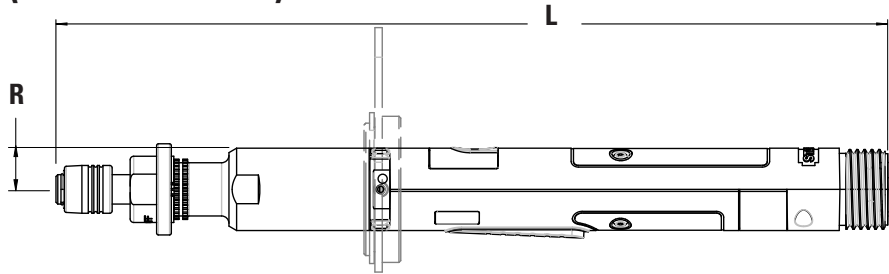
EB PTS Tool Options

EB02LP, EB12LP

Output Options	Part No.
1/4" SD	20D119302
3/8" SD Socket Lock Pin	Part No.
Standard	20D227800
Rounded (Ball Detent)	20D227801
Reaction Bar	Part No.
Reaction Bar, Aluminum 17"	20K100103
PTS Spline Cover	20D217001

Model	Rated Speed		Torque		"R" Side to Center		"L" Length		Weight		Output
	RPM	Nm	lb ft	mm	in	mm	in	kg	lb	Standard	
EB02LP-2	1115	2	1.5	20.4	0.8	359	14.1	0.69	1.52	1/4" QC	
EB02LP-4	1115	4	2.9	20.4	0.8	359	14.1	0.69	1.52	1/4" QC	
EB12LP-6	2300	6	4.4	20.4	0.8	359	14.1	0.85	1.87	1/4" QC	
EB12LP-9	1595	9	6.6	20.4	0.8	359	14.1	0.85	1.87	1/4" QC	
EB12LP-14	1020	14	10.3	20.4	0.8	359	14.1	0.85	1.87	1/4" QC	

Inline Lever Tools (0.4 to 14 Nm)



EB Inline Tool Options

EB02, EB12

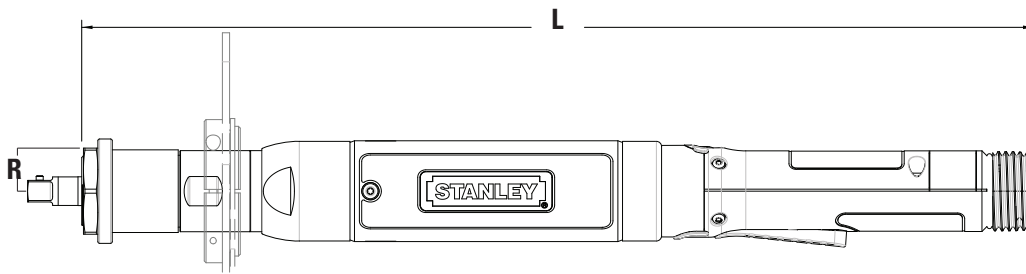
Output Options	Part No.
3/8" SD	20D119301
1/4" SD	20D119302
3/8" SD Socket Lock Pin	Part No.
Standard	20D227800
Rounded (Ball Detent)	20D227801
Reaction Bar	Part No.
Reaction Bar, Aluminum	20K100103
Reaction Bar, Steel	20K100104
Suspension Bails ***	Part No.
Wire Bail	A3061
Swivel	20K101402

Model	Rated Speed		Torque		"R" Side to Center		"L" Length		Weight		Output
	RPM	Nm	lb ft	mm	in	mm	in	kg	lb	Standard	
EB02LB-2	1115	2	1.5	17.8	0.7	359	14.1	0.69	1.52	1/4" QC	
EB02LB-4	1115	4	2.9	17.8	0.7	359	14.1	0.69	1.52	1/4" QC	
EB12LB-6	2300	6	4.4	17.8	0.7	359	14.1	0.69	1.52	1/4" QC	
EB12LB-9	1595	9	6.6	17.8	0.7	359	14.1	0.69	1.52	1/4" QC	
EB12LB-14	1020	14	10.3	17.8	0.7	359	14.1	0.69	1.52	1/4" QC	

EB Series - Inline Lever



Inline Lever Tools (3.2 to 2000 Nm)



Model	Rated Speed		Torque		"R" Side to Center		"L" Length		Weight		Output
	RPM	Nm	lb ft	mm	in	mm	in	kg	lb	Standard	
EB22LB-16	1340	16	11.8	23.7	0.93	352	13.8	1.06	2.33	3/8" SD	
EB33LB-28	1590	28	20.7	24.7	0.97	416	16.4	1.40	3.08	3/8" SD	
EB33LB-40	1120	40	29.5	24.7	0.97	416	16.4	1.40	3.08	3/8" SD	

EB Inline Tool Options

EB22, EB33

Output Options	Part No.
3/8" 24-Thread	20D281100
Reaction Bar	Part No.
Reaction Bar, Aluminum	F3698
Reaction Bar, Steel	20K100100
Base Mount Bracket	A8606
Mounting Flange-B	20K101000
3/8" SD Socket Lock Pin	Part No.
Standard	20D227800
Rounded (Ball Detent)	20D227801
Suspension Bails	Part No.
Wire Bail	A3061
Swivel	20K101400
Standard	B3432

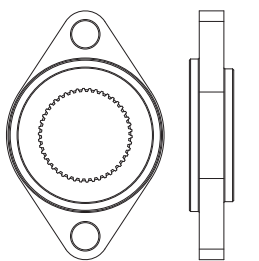
Model	Rated Speed		Torque		"R" Side to Center		"L" Length		Weight		Output
	RPM	Nm	lb ft	mm	in	mm	in	kg	lb	Standard	
EB34LB1-55	830	55	40.6	26.7	1.05	463	18.2	2.04	4.49	1/2" SD	
EB55LB1-100	853	100	73.7	26.7	1.05	479	18.9	5.17	11.38	1/2" SD	
EB44LB1-120	560	120	88.5	26.7	1.05	479	18.9	2.85	6.27	1/2" SD	
EB45LB2-140	465	140	103.3	29	1.15	533	21	3.42	7.52	3/4" SD	
EB55LB2-170	640	170	125.4	32	1.25	560	22.1	4.62	10.18	3/4" SD	
EB45LB2-190	355	190	140	29	1.15	533	21	4.3	9.46	3/4" SD	
EB55LB2-250	400	250	184.4	32	1.25	560	22.1	4.93	10.85	3/4" SD	
EB55LB3-320	310	320	236	32	1.25	573	22.5	5.01	11.03	3/4" SD	
EB55LB4-460	220	460	339.3	44	1.7	621	24.4	7.60	16.73	1" SD	
EB55LB4-620	165	620	457.2	44	1.7	621	24.4	7.60	16.73	1" SD	
EB55LB5-800	125	800	590.1	48	1.9	651	25.6	10.05	22.12	1" SD	
EB55LB5-1100	80	1100	811.4	48	1.9	651	25.6	10.05	22.12	1" SD	
EB55LB5-1500	60	1500	1106.4	48	1.9	683	26.9	10.05	22.12	1" SD	
EB55LB5-2000	50	2000	1475.2	48	1.9	683	26.9	10.57	23.25	1" SD	

EB Inline Tool Options

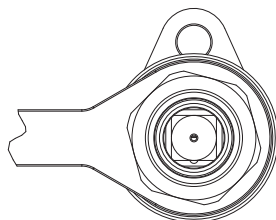
EB34, EB44, EB45, EB55

Reaction Bar	Part No.
Reaction Bar Assembly	20K100000
Mounting Flange Assembly	20K100300
Base Mount Bracket Assembly	20K100500
Suspension Bails	Part No.
Wire Bail	A3061
Swivel	20K200000
1/2" SD Socket Lock Pin	Part No.
Standard	20D227800
Rounded (Ball Detent)	20D227801

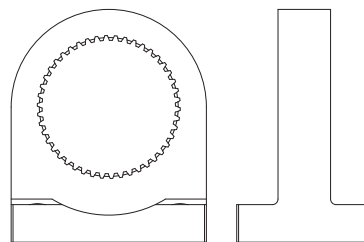
Mounting / Reaction Options



Optional Mounting Flange



Reaction Bar / Bail



Optional Base Mount Bracket