

CVIC Range Current controlled



Easy to integrate

Small size and smooth design for a simple installation.

Speed up the set up time by using the self learning process. Provides automatic set up for the tool to optimize your fastening process.

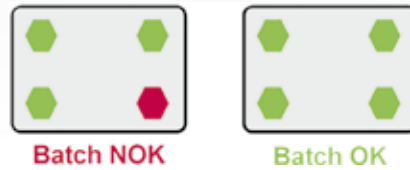
Multi torque capability

Replace multiple pneumatic tools with one electric tool per station.



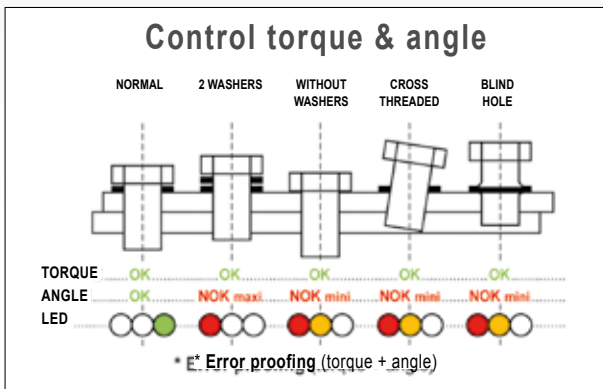
Fastening quality guaranteed in all your products

Set up a batch count to ensure all bots are tightened with correct strategy.



Quality of tightening

Control torque and angle with multi phases strategies.



Advanced ergonomics

Maximize your operators' comfort with ergo stop and direct reporting led in the controller and on the tool.



Open to peripherals

Increase your assembly quality and process through barcode reader, socket tray or bit tray. Control tightening order with our positioning system.

Technical features

CVIC Range

MAIN FUNCTIONS	NORMAL		ECP HIGH TORQUE	
	L STANDARD	H ADVANCED	L STANDARD	H ADVANCED
Quick cycle with self-learning of the joint	✓	✓		
Number of cycles in the controller	1	15	1	15
Number of phases	15	15	15	15
Batch count (999 OK reports)	✓	✓	✓	✓
TIGHTENING RESULTS				
Torque + Angle + Date + Time + Report	5000 to 20000 according configuration			
TYPES OF PHASES IN A CYCLE				
Search Sequence	✓	✓		
Run Down speed	✓	✓	✓	✓
Final speed	✓	✓	✓	✓
Run reverse	✓	✓		
Action on NOK	✓	✓		
Prevailing torque monitoring	✓	✓		
FINAL SPEED STRATEGIES				
Torque control + Angle monitoring	✓	✓	✓	✓
Angle control + Torque monitoring	✓	✓	✓	✓
DISPLAY AND PROGRAMMING				
Display				
LCD display	✓	✓	✓	✓
Keyboard				
8 button keypad	✓	✓	✓	✓
Reports				
LEDs	6	6	6	6
PC Software Windows				
program cycles, collect, display and save results, run statistics, curves				
CVIPC2000 *: Connection 'point to point' (RS232)	✓	✓	✓	✓
Connection through ethernet	✓	✓	✓	✓
*All CVIPC2000 versions are compatible with CVICs				
MAINTENANCE				
Access to all tool parameters (tool memory)	✓	✓	✓	✓
Autotest of the complete system	✓	✓	✓	✓
Spindle rotation test	✓	✓	✓	✓
Input/Output selection	✓	✓	✓	✓
Date of the last maintenance operation	✓	✓	✓	✓
Total and partial cycle counters	✓	✓	✓	✓
PERIPHERALS				
Input/Output	8/8	8/8	8/8	8/8
Serial port RS232 (PC transfer, Bar code, Report output)	✓	✓	✓	✓
Ethernet connection (CVIPC2000 / CVInet)	✓	✓	✓	✓
MODEL				
CONTROLLER for low torque tools	CVIC II L-2	CVIC II H-2		
CONTROLLER for the other tools	CVIC II L-4	CVIC II H-4	CVIC II L-4	CVIC II H-4
MAINS SUPPLY				
Single-phase, automatic switching 110V/230V	✓	✓	✓	✓

Controllers - CVIC

Electric current control



CVIC II-L2
CVIC II-H2



CVIC II-L4
CVIC II-H4

ECS (M20) 0.12 - 16 Nm	
ECSA 0.55 - 11.5 Nm	
ECSF 0.12 - 16 Nm	
ECPL/LT 1 - 20 Nm	
ECFL 1 - 20 Nm	
ECA15 5 - 15 Nm	
ECD5 2 - 6 Nm	
MC35-10 2.5 - 8 Nm	
ECA 7 - 200 Nm	
ECD 7 - 120 Nm	
ECP 7 - 40 Nm	
ECFS 7 - 30 Nm	
ECP HT 30 - 4000 Nm	
MC 5 - 135 Nm	

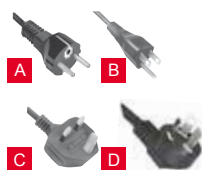
MODEL	PART NUMBER	TOOLS	CONSUMPTION (current)		MAINS SUPPLY	DIMENSIONS			WEIGHT		
			115V	230V		50/60 hertz	WIDTH	HEIGHT	DEPTH	kg	lb.
			mm	in.		mm	in.	mm	in.	kg	lb.

CVIC II CONTROLLERS

CVIC II-L2	615 932 676 0	ECS / ECPL(T) / ECD5 / MC35-10 / ECA15	4A	2A	Single-phase	130	5.1	278	10.9	291	11.5	5	11
CVIC II-H2	615 932 677 0	ECS / ECPL(T) / ECD5 / MC35-10 / ECA15	4A	2A	100 to 250 V	130	5.1	278	10.9	291	11.5	5	11
CVIC II-L4	615 932 678 0	Other tools	8A	4A	Single-phase	130	5.1	278	10.9	291	11.5	5	11
CVIC II-H4	615 932 679 0	Other tools	8A	4A	100 to 250 V	130	5.1	278	10.9	291	11.5	5	11

START-UP KIT to be ordered with the controller
Including: **Power cable and plug**

PLUG	DESCRIPTION	PART NO.
A	European	615 917 201 0
B	US	615 917 203 0
C	UK	615 917 202 0
D	Chinese	615 917 206 0



OPTIONAL ACCESSORIES

	PART NO.
• PC cable Length 2m (78.7")	615 917 047 0
• Printer cable Length 2m (78.7")	615 917 011 0
• 37 pin D-Sub female I/O adapteR	615 919 003 0
• BRDx2 (Backup Rescue Device)	615 936 328 0

Software

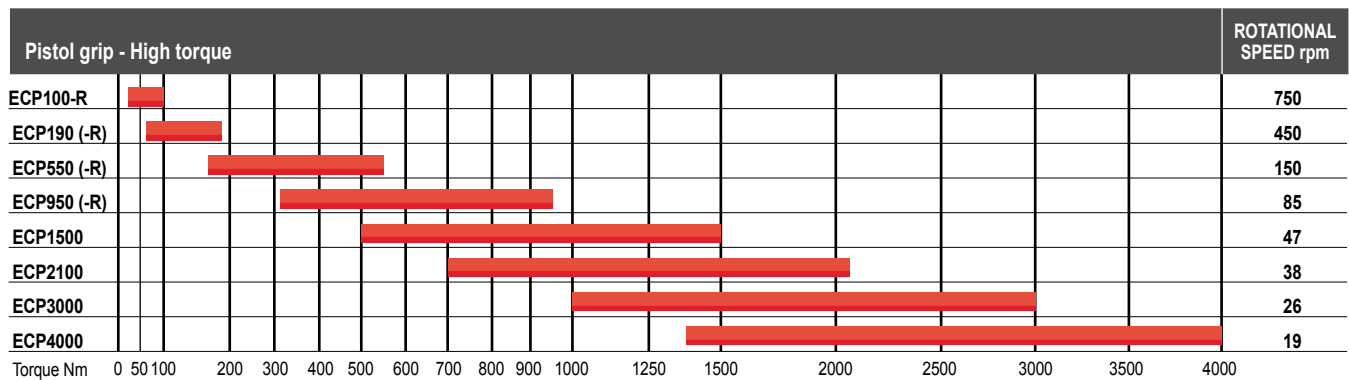
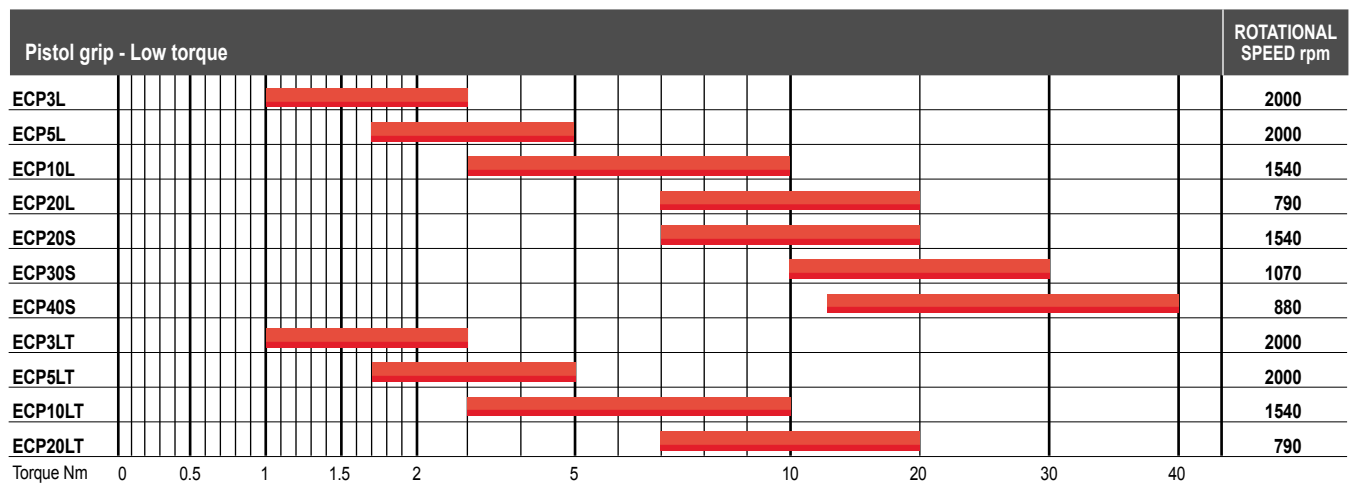
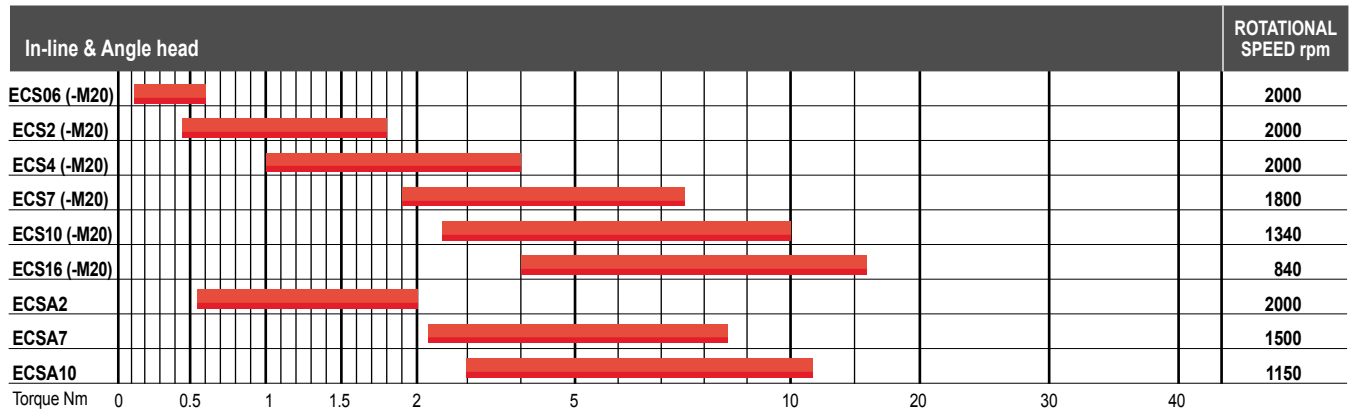
MODEL	PART NO.
CVIPC2000 for CVIS/CVIC 1 Install	615 927 521 0
CVIPC2000 for CVIS/CVIC 2 Install	615 927 534 0
CVINET WEB 1 controller	615 927 736 0
Open protocol 1 license	615 927 830 0

Fieldbus / Protocol

MODEL	PART NO.
Ethernet IP Module	615 927 594 0
Profibus DP Module	615 927 595 0
ProfiNet Module (1 port)	615 927 596 0
ProfiNet Module (2 ports)	615 927 597 0
CC-Link Module	615 927 598 0
Devicenet Module	615 927 599 0
MODBUS TCP Slave	615 927 615 0

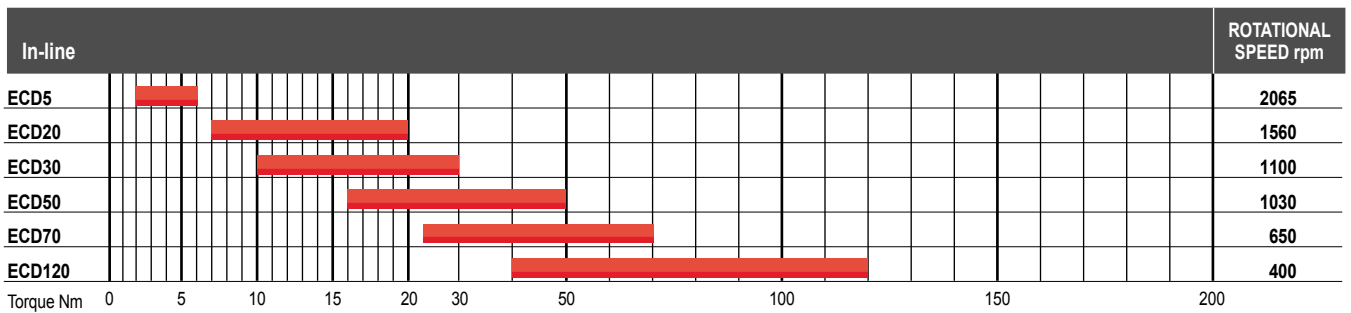
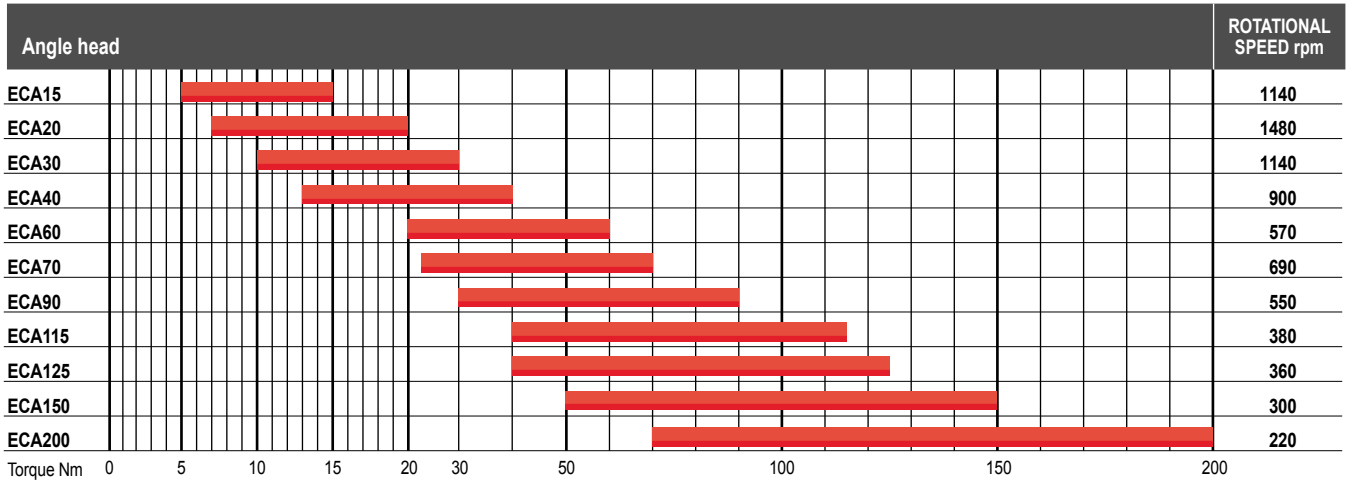
Torque range

Performances of Portable electric nutrunners ECS, ECSA and ECP Series



Torque range

Performances of Portable electric nutrunners ECA and ECD Series



Performances of Fixtured electric spindles ECSF and MC Series

