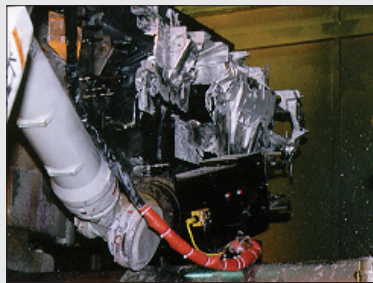
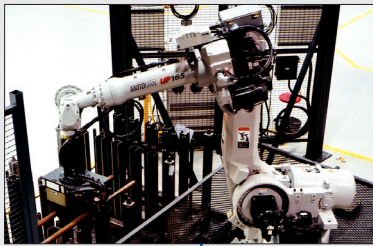


MATERIAL HANDLING



DIECAST MACHINE TENDING



MACHINE TENDING

### TOP REASONS TO BUY

- Versatile, high-performance robot for heavy-payload machine or press tending and other handling tasks.
- Powerful DX100 controller provides fast Ethernet communication and can deliver significant cost savings by eliminating costly PLCs or HMIs for cell control.
- Windows® CE programming pendant with full-color touch screen and USB interface



# MH165-100

MATERIAL HANDLING • MACHINE TENDING • PRESS TENDING

**Payload: 100 kg**

### Fast, Flexible and Powerful

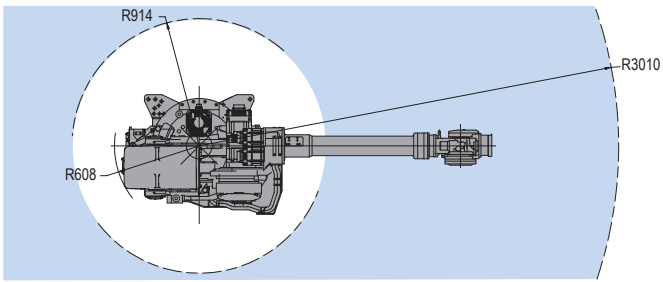
- High-speed six-axis MH165-100 robot sets the standard for versatility in the large robot market.
- Provides superior performance in machine and press tending, and other heavy-payload material handling applications.
- 100 kg payload; 4,091 mm vertical reach; 3,010 mm horizontal reach; ±0.2 mm repeatability.
- Fast axial speeds and acceleration reduce cycle times and increase production output.
- Large work envelope and high moment and inertia ratings.
- Compact, slim design allows robots to reduce cycle time and reach into confined spaces, improving system productivity.
- MH165-100 model is floor-mounted.

### DX100 Controller

- Patented multiple robot control supports up to 8 robots/72 axes.
- Windows® CE programming pendant with color touch screen and USB interface.
- Faster processing speeds for smoother interpolation. Quicker I/O response. Accelerated Ethernet communication.
- Extensive I/O suite includes integral PLC and touch screen HMI, 2,048 I/O and graphical ladder editor.
- Supports all major fieldbus networks, including EtherNet/IP, DeviceNet, Profibus-DP and many others.
- Compliant to ANSI/RIA R15.06-1999 and other relevant ISO and CSA safety standards. Optional Category 3 functional safety unit.
- Interface panel function allows the programming pendant to be configured as a system HMI.

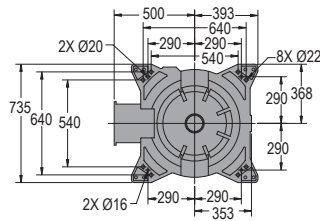
# MH165-100 ROBOT

All dimensions are metric (mm) and for reference only. Please request detail drawings for all design/engineering requirements.

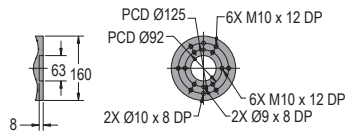


INTERNAL USER I/O CONNECTION  
JL05-2A24-28PC(WITH CAP)  
MATING CONNECTOR IS NOT SUPPLIED  
BUT COMPLETE CABLES ARE AVAILABLE AS AN OPTION

INTERNAL USER AIR LINES 3/8" PIPE TAP CONNECTION (WITH PLUG)



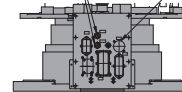
VIEW A



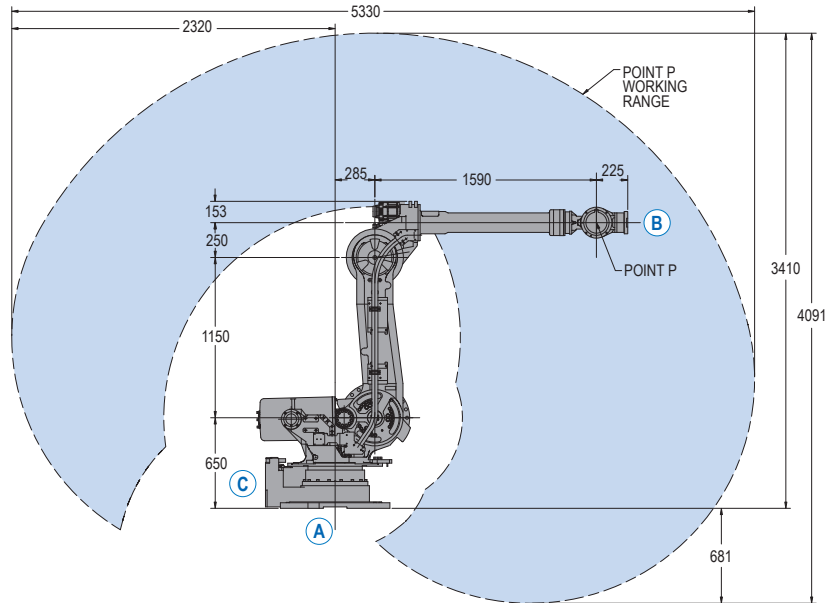
VIEW B

INTERNAL USER AIR LINES 3/8" PIPE TAP CONNECTION (WITH PLUG)

INTERNAL USER I/O CONNECTION  
JL05-2A24-28PC(WITH CAP)  
MATING CONNECTOR IS NOT SUPPLIED  
BUT COMPLETE CABLES ARE AVAILABLE AS AN OPTION



VIEW C



## MH165-100 SPECIFICATIONS

<b>Structure</b>	Vertical jointed-arm type	
<b>Controlled Axes</b>	6	
<b>Payload</b>	100 kg (220.5 lbs)	
<b>Vertical Reach</b>	4,091 mm (161.1")	
<b>Horizontal Reach</b>	3,010 mm (118.5")	
<b>Repeatability</b>	±0.2 mm (0.008")	
<b>Maximum Motion Range</b>	S-Axis (Turning/Sweep)	±180°
	L-Axis (Lower Arm)	+76°/-60°
	U-Axis (Upper Arm)	+230°/-142.5°
	R-Axis (Wrist Roll)	±360°
	B-Axis (Bend/Pitch/Yaw)	±130°
<b>Maximum Speed</b>	S-Axis	110°/s
	L-Axis	110°/s
	U-Axis	110°/s
	R-Axis	175°/s
	B-Axis	150°/s
T-Axis	240°/s	
<b>Approximate Mass</b>	1,120 kg (2,469.6 lbs)	
<b>Brakes</b>	All axes	
<b>Power Consumption</b>	5 kVA	
<b>Allowable Moment</b>	R-Axis	833 N • m
	B-Axis	833 N • m
	T-Axis	490 N • m
<b>Allowable Moment of Inertia</b>	R-Axis	75 kg • m <sup>2</sup>
	B-Axis	75 kg • m <sup>2</sup>
	T-Axis	25 kg • m <sup>2</sup>
<b>Internal User I/O Cable</b>	23 conductors + ground	
<b>Internal User Air Line</b>	2 - 3/8" PT connections	

## DX100 CONTROLLER SPECIFICATIONS\*\*

<b>Dimensions (mm)</b>	800 (w) x 1,000 (h) x 650 (d) (31.5" x 39.4" x 25.6")
<b>Approximate Mass</b>	250 kg max. (551.3 lbs)
<b>Cooling System</b>	Indirect cooling
<b>Ambient Temperature</b>	During operation: 0° to 45° C (32° to 113° F) During transit and storage: -10° to 60° C (14° to 140° F)
<b>Relative Humidity</b>	90% max. non-condensing
<b>Primary Power Requirements</b>	3-phase, 240/480/575 VAC at 50/60 Hz
<b>Digital I/O</b>	Standard I/O: 40 inputs/40 outputs consisting of 16 system inputs/16 system outputs, 24 user inputs/24 user outputs 32 Transistor Outputs; 8 Relay Outputs Max. I/O (optional): 2,048 inputs and 2,048 outputs
<b>Position Feedback</b>	By absolute encoder
<b>Program Memory</b>	JOB: 200,000 steps, 10,000 instructions CIO Ladder Standard: 15,000 steps Expanded: 20,000 steps
<b>Pendant Dim. (mm)</b>	169 (w) x 314.5 (h) x 50 (d) (6.7" x 12.4" x 2")
<b>Pendant Weight</b>	.998 kg (2.2 lbs)
<b>Interface</b>	One Compact Flash slot; One USB port (1.1)
<b>Pendant Playback Buttons</b>	Teach/Play/Remote Keyswitch selector Servo On, Start, Hold, and Emergency Stop Buttons
<b>Programming Language</b>	INFORM III, menu-driven programming
<b>Maintenance Functions</b>	Displays troubleshooting for alarms, predicts reducer wear
<b>Number of Robots/Axes</b>	Up to 8 robots, 72 axes
<b>Multi Tasking</b>	Up to 16 concurrent jobs, 4 system jobs
<b>Fieldbus</b>	DeviceNet Master/Slave, AB RIO, Profibus, Interbus-S, M-Net, CC Link, EtherNet IP/Slave
<b>Ethernet</b>	10 Base T/100 Base TX
<b>Safety</b>	Dual-channel Emergency Stop Pushbuttons, 3-position Enable Switch, Manual Brake Release Meets ANSI/RIA R15.06-1999, ANSI/RIA/ISO 10218-1-2007 and CSA Z434-03

\*\*See DX100 Controller data sheet (DS-399) for complete specifications

www.motoman.com

**YASKAWA**

YASKAWA AMERICA, INC. ■ MOTOMAN ROBOTICS DIVISION  
100 AUTOMATION WAY, MIAMISBURG, OHIO 45342  
TEL: 937.847.6200 ■ FAX: 937.847.6277

TECHNICAL SPECIFICATIONS SUBJECT TO CHANGE WITHOUT NOTICE  
DS-541-A ©2017 YASKAWA AMERICA, INC. JANUARY 2017

MOTOMAN IS A REGISTERED TRADEMARK  
WINDOWS IS A REGISTERED TRADEMARK OF MICROSOFT  
ALL OTHER MARKS ARE THE TRADEMARKS AND  
REGISTERED TRADEMARKS OF YASKAWA AMERICA, INC.