



MH180

MATERIAL HANDLING | MACHINE TENDING | PRESS TENDING

KEY BENEFITS

Small mounting surface and minimum interference radius save valuable floorspace

Optimized robot design with increased speed reduces cycle time

Increased payload, moment and inertia ratings allow the robots to be used in a wide variety of applications

Slim wrist profile for high density spacing and for reaching into confined spaces

SPECIFICATIONS

180 kg payload

2,702 mm horizontal reach

3,393 mm vertical reach

±0.2 mm repeatability

Floor mounted

CONTROLLERS



DX200



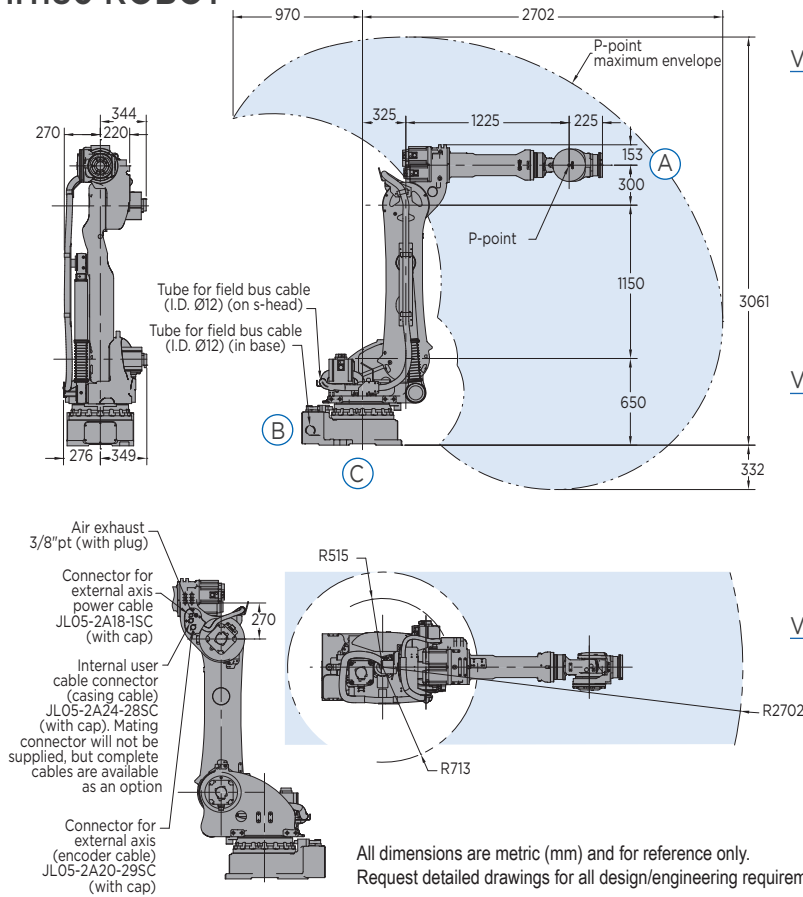
FS100



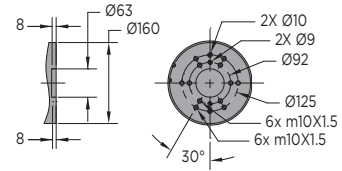
MLX200

- Powerful six-axis handling robot features high-rigidity speed reducers and high-speed motion which reduce cycle times.
- The MH180 features increased payload capacity as well as increased speed of each axis over previous models.
- High payload and increased moment and inertia ratings allow the robot to handle larger and heavier payloads.
- Streamlined upper arm design features a slim wrist profile and reduces robot width by over 200 mm. This allows easier reach into confined spaces, improving application flexibility.
- Base design reduces robot interference radius to only 515 mm, the lowest in its class. This allows the robot to be mounted closer to machines and fixtures, making best use of valuable floorspace.
- Improved design removes the counterbalance from robot base. This reduces the mass of the arm, enabling higher acceleration, deceleration and speed.
- The required mounting surface is reduced by nearly 44%, saving valuable floor space and making the robot easier to apply.
- Up to 70% less power consumption during motion and 25% savings during idle periods compared to previous models.
- Cables and air lines are routed through robot base to upper arm to increase cable life, enhance safety and reduce teaching time.
- Cable installation tube in the base of the robot facilitates fieldbus routing to the robot upper arm and/or gripper.
- Pre-wired for servo gripper which allows a wider range of product handling.
- The MH180 has an IP67-rated wrist and an IP54 body standard. An XP (eXtra Protection) package that increases the body protection rating to IP65 is available.
- Also available with 165 kg payload capacity (MS165) for spot welding applications.

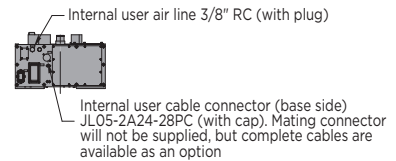
MH180 ROBOT



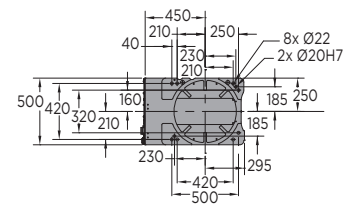
VIEW A



VIEW B



VIEW C



All dimensions are metric (mm) and for reference only.
Request detailed drawings for all design/engineering requirements.

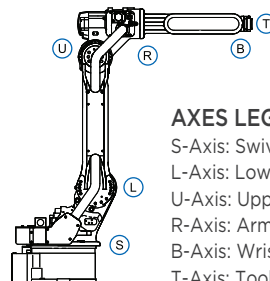
SPECIFICATIONS: MH180

Axes	Maximum motion range [°]	Maximum speed [°/sec.]	Allowable moment [N•m]	Allowable moment of inertia [kg•m²]	Controlled axes	6
S	±180	125	-	-	Maximum payload [kg]	180
L	+76/-60	115	-	-	Repeatability [mm]	±0.2
U	+90/-147	125	-	-	Horizontal reach [mm]	2,702
R	±360	182	1,000	90	Vertical reach [mm]	3,393
B	±130	175	1,000	90	Temperature [°C]	0 to +45
T	±360	265	618	46.3	Humidity [%]	20 - 80
					Weight [kg]	970
					Power requirements DX200	3-phase; 240/480/575 VAC at 50/60 Hz
					MLX200	3-phase; 200/230 VAC at 50/60 Hz
					Power rating [kVA] DX200	5.0
					MLX200	8.5
					Internal I/O cable [conductors w/ ground]	24
					Internal air line [connections]	(1) 3/8"

Specifications for MH180 with XP package may be different.

OPTIONS

Extended length manipulator cables
Robot risers and base plates
External axis kits
Wide variety of fieldbus cards
Vision systems
Robot base and upper arm I/O cables
XP package and anti-corrosive paint



AXES LEGEND

S-Axis: Swivel Base
L-Axis: Lower Arm
U-Axis: Upper Arm
R-Axis: Arm Roll
B-Axis: Wrist Bend
T-Axis: Tool Flange

Yaskawa America, Inc.
Motoman Robotics Division

100 Automation Way
Miamisburg, OH 45342
Tel: 937.847.6200
Fax: 937.847.6277

motoman.com

YASKAWA