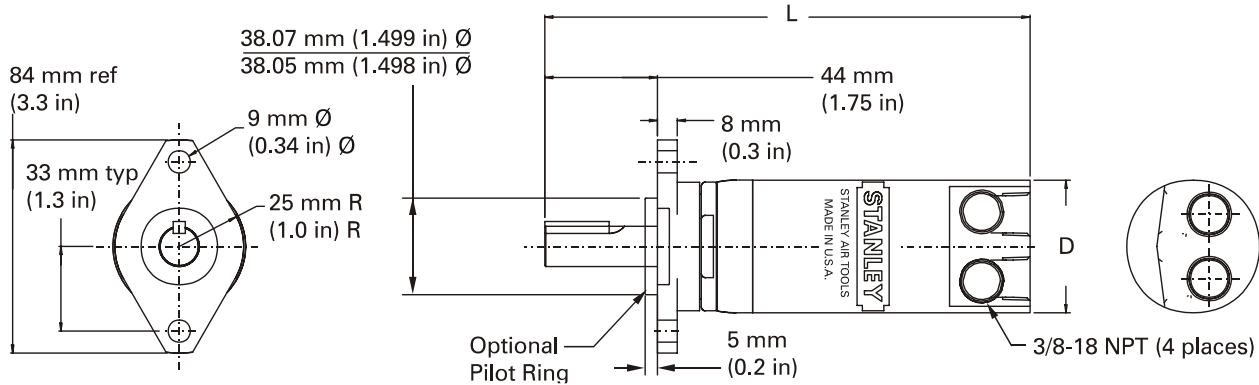


Prime Movers

M40 PRIME MOVER MOTORS-FLANGE MOUNTED

FIXTURED-PNEUMATIC –FLANGE MOUNTED

5.5 – 32 Nm (4 – 24 lb ft)



Simple Design And Sturdy Construction Provide Long Life And Low Maintenance Costs

- Regulating of the air pressure adjusts speed and power
- High power per pound ratio minimizes required space
- Air motor may be stalled repeatedly with no damage to the motor
- No spark hazard allows air motor use in explosive atmospheres or near flammable material
- Air motors are not susceptible to thermal breakdown in high temperature areas
- Continuous duty operation maximizes production use

M40F Prime Mover Motors give reliable and economical power for flange mounted motor geometry.

STANDARD CONFIGURATION:

M40 Output Shaft: 16mm (5/8") diameter x 44mm (1.75") long with 5 x 5 x 25 mm (3/16" x 3/16" x 1") long keyway

Min Hose: M30: 5/16" ID, Air Inlet 1/4" NPT (1/4" ISO Inlet Option); 10 l/s (20 ft³/m) M40: 1/2" ID, Air Inlet 3/8" NPT (3/8" ISO Inlet Option); 20 l/s (40 ft³/m)

MODEL	FREE SPEED	STALL TORQUE		RATED HP	MAX RPM	TORQUE @MAX HP		"L" LENGTH		"D" DIAMETER		WEIGHT	
	RPM	Nm	lb ft	H.P.	RPM	Nm	lb ft	mm	in	mm	in	kg	lb
NON-REVERSIBLE M40F													
M40F-37	3700	8.5	6	1.2	1875	4.5	3.4	191	7.5	52	2.06	2	4.3
M40F-26	2600	12.5	9		1325	6.5	5						
REVERSIBLE M40FR													
M40FR-13	1300	19.5	14	0.9	670	10	7	191	7.5	52	2.06	2	4.3
M40FR-7	750	32	24		395	16.5	12						

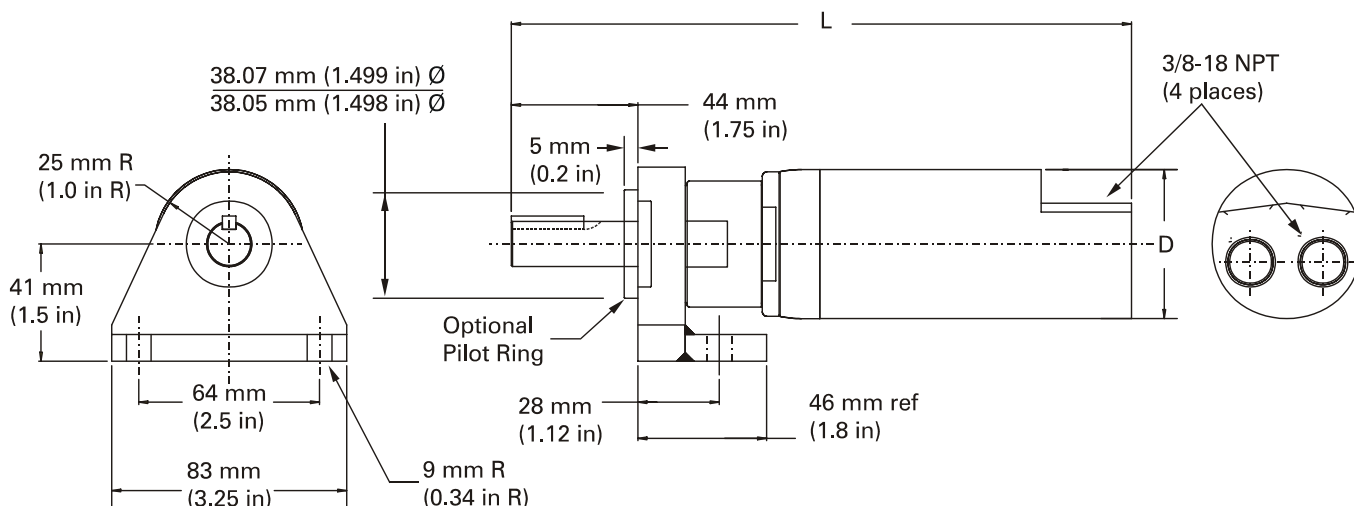
ADDITIONAL COST OPTIONS:

- M4005 Pilot Ring for M40F
- Reverse Rotation
- Special Gearing

M40 PRIME MOVER MOTORS-BASE MOUNTED

FIXTURED-PNEUMATIC – BASE MOUNTED

14 – 59 Nm (19 – 80 lb ft)



Simple Design And Sturdy Construction Provide Long Life And Low Maintenance Costs

- Regulating of the air pressure adjusts speed and power
- High power per pound ratio minimizes required space
- Air motor may be stalled repeatedly with no damage to the motor
- No spark hazard allows air motor use in explosive atmospheres or near flammable material
- Air motors are not susceptible to thermal breakdown in high temperature areas
- Continuous duty operation maximizes production use

M40B Prime Mover Motors give reliable and economical power for base mounted motor geometry.

STANDARD CONFIGURATION:

Output Shaft: 16mm (5/8") diameter x 44mm (1.75") long with 5 x 5 x 25 mm (3/16" x 3/16" x 1") long keyway

Min Hose: M30: 5/16" ID, Air Inlet 1/4" NPT (1/4" ISO Inlet Option); 10 l/s (20 ft³/m) M40: 1/2" ID, Air Inlet 3/8" NPT (3/8" ISO Inlet Option); 20 l/s (40 ft³/m)

MODEL	FREE SPEED	STALL TORQUE		RATED HP	MAX RPM	TORQUE @MAX HP		"L" LENGTH		"D" DIAMETER		WEIGHT	
	RPM	Nm	lb ft	H.P.	RPM	Nm	lb ft	mm	in	mm	in	kg	lb
REVERSIBLE M40BR													
M40BR-13	1300	19	14	0.92	670	10	7	191	7.5	52	2.06	2	4.3
M40BR-7	750	32	24		395	16.5	12	216	8.5			2.2	4.7
M40BR-3	300	80	59		165	40	29						

ADDITIONAL COST OPTIONS:

- M4005 Pilot Ring for M40BR
- Reverse Rotation
- Special Gearing